



Caring for Seniors in the Heartland

[www.khca.org](http://www.khca.org) 785-267-6003

**June 14-15, 2022**

**2022**

**Nurse Leadership  
Conference**

*Brought to you in part by:*




**ENCORE**  
REHABILITATION

**The Bluemont Hotel  
1212 Bluemont Ave.  
Manhattan, KS 66502**

**Room Rate of \$99 includes breakfast—Available under KHCA/KCAL  
until May 20, 2022, call 785-473-7091**

**Register online by going to [www.khca.org](http://www.khca.org) and clicking “Education Calendar”**

## Tuesday, June 14, 2022

	11:00 am	Welcome! Networking Lunch with Vendors and Registration
	12:10pm	Welcome from Polly Berkley, KHCA, Linda Morse, Mayor, and Teresa Coover President of Nurse Advisory Committee
1.0 Contact Hour	12:20 - 1:10	<b>Leading with Emotional Intelligence: Courage, Resilience, and Compassion - Kit Welchlin, MA, CSP</b> The most effective healthcare professionals have a high degree of what has come to be known as emotional intelligence. The qualities that make up emotional intelligence – <b>self-awareness, self-regulation, motivation, empathy, and social skill</b> – enable the most successful healthcare professionals to raise their own and others’ performance to a higher level.
1.0 Contact Hour	1:10 - 2:00	<b>Leveraging Your Greatest Asset: Your Strengths - Kristin O’Shea</b> Discovering and optimizing your strengths, both personally and professionally. What if we all viewed our natural tendencies and top skills as strengths instead of weaknesses? Our productivity, motivation and engagement skyrockets when we learn to work with our strengths, (and the strengths of our team) not against them.
	2:00 - 2:20	Break with vendors
1.5 Contact Hours	2:20 – 3:35	Strengths Training (continued) - Kristin O’Shea
1.0 Contact Hour	3:35 - 4:20	<b>Effective Partnerships with the Consultant Pharmacist...They Really Are Our Partners - Linda Farrar, RN, LNHA and Kate Niemann, PharmD, BC, GP</b> F756, Drug Regimen Review has been in the top 3 citation in Kansas for several months now. Information presented in this session will allow participants to fully understand the regulation and the intent of the regulation, along with the role and expectations of and by the consultant pharmacist in addition to the responsibilities of the nursing staff of the facility.
0.5 Contact Hour	4:20 - 4:50	Final Q & A and wrap up for the day
Special Thanks to our Sponsor:	 <p>Kansas Mobile Solutions A Division of the Wichita Radiological Group X-Ray · Ultrasound · EKG</p>	7:00 pm Nurse Networking—Social drinks, Games and Lots of Fun at Goolsby’s! 1212 Bluemont Ave, Ste 130, Manhattan, KS 66502

## Wednesday, June 15, 2022

	8:30 am	Nurse Advisory Committee Meeting with Light Breakfast <i>Elections, changes in by laws and scholarships and hot topics</i>
1.5 Contact Hours	9:00 - 10:15	<b>Who’s In Charge of the Resident’s Care, Anyway? - Linda Farrar, RN, LNHA</b> An individualized, person-centered care plan is the “instruction manual” for caring for each resident based on the resident’s identified needs and consistent with resident rights. This session will focus on the vital importance of a truly integrated interdisciplinary approach to development and implementation of the care plan for each resident keeping the resident as the “locus of care”. The session will also include the importance of ensuring that the resident’s care plan is revised when changes in the care occur.

## Wednesday, June 15, 2022 continued

	10:15 - 10:30	<i>Break with vendors</i>
1.5 Contact Hours	10:30 - 11:45	<b>Hiring and Onboarding Great Talent Including Best Practices for Behavioral Interviews</b> - <i>Kristina Dietrich, HR Partners</i> Review the steps for “hiring and onboarding talent” to find the best matches for your open positions. This will include interviewing tips specific to behavioral interviews and looking for red flags when conducting interviews. Special focus will be on orientation and onboarding.
	11:45 - 1:00	<i>Lunch On Your Own</i>
1.5 Contact Hours	1:00 - 2:15	<b>QAPI</b> - <i>Linda Farrar, RN, LNHA</i> QAPI, QA, QAA, CQI, Six Sigma, and more programs have been a vital part of health care providers for many years. Some programs have been formal and some informal. The Conditions of Participation included specific provisions that all CMS certified facilities have a QAPI program and they went so far as to dictate the elements of the facility’s QAPI plan and program. And yet, most facilities believe that the QAPI program amounts to a quarterly meeting and PIPs. There is so much more to building an effective QAPI program and this session will provide a “roadmap” to an effective quality improvement program.
	2:15 - 2:30	<i>Last Break of the Day with vendors</i>
1.0 Contact Hour	2:30 - 3:20	<b>Nurse Think Tank &amp; Hot Topic Discussion on Best Practices for Nurses in LTC</b> - <i>Led by Nurse Advisory Committee</i>
	3:20 - 3:30	<i>Final Wrap up and Departures</i>

## Continuing Education Information

**Nurses** - The Kansas Health Care Association is approved as a provider of continuing nursing education by the Kansas State Board of Nursing. This offering is approved for up to **10.5** contact hours applicable for RN and LPN relicensure. (KSBN LT0030-0338)

**Dietitians** - This course is approved for up to **10.5** continuing education clock hours for Kansas Licensed Dietitians by the Kansas Department of Aging and Disability Services. KDADS Health Occupations Credentialing Approved Sponsorship Number: LTS-A0002.

**Social Workers** - The Kansas Health Care Association is approved as a provider of continuing education by the Kansas Behavioral Sciences Board. This offering is approved for **10.5** continuing education hours. (KSBSB 17-006).

**Administrators** - This course offering is approved for up to **10.5** continuing education clock hours for Kansas licensed adult care home administrators by the Kansas Department of Aging and Disability Services KDADS Health Occupations Credentialing Approved Sponsorship Number: LTS-A0001.

**Operators** - This course offering is approved for up to **10.5** continuing education clock hours for registered operators: in the core areas of Resident Care (**4.0**) and Administration (**6.5**), by the Kansas Department of Aging and Disability Services KDADS Health Occupations Credentialing Approved Sponsorship Number: LTS-A0001.

*Attendance Certificates will be available for all other attendees. Consult your licensing board or certifying agency for approval.*

## WHY YOU SHOULD ATTEND:

This special Nurse Leadership Conference is an opportunity for nurses working in the Long Term Care setting to strengthen their leadership skills. Building strong leaders through education is essential to promoting a better quality of life for our residents. Meet new vendor partners and spend time networking and getting to know others that are doing the same valuable work that you are doing!

**CHIEFS TICKETS BEING  
RAFFLED OFF TO  
RAISE MONEY  
FOR NURSE  
SCHOLARSHIPS - TICKETS  
WILL BE 1 FOR \$20**

Donated by:  **Breathe**  
OXYGEN & MEDICAL SUPPLY

## CONFERENCE LEADERS



**Teresa  
Coover**



**Kit  
Welchlin**



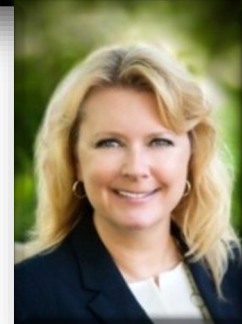
**Kristen  
O'Shea**



**Linda  
Farrar**



**Kate  
Niemann**



**Kristina  
Dietrich**

*Special Thanks to our 2022 Platinum Sponsor!*



*Thank you to McKesson for Sponsoring the  
Leadership Assessments*

**MCKESSON**

### CONFERENCE CANCELLATION POLICY

KHCA/KCAL Continues to monitor federal, state and local recommendations and will update these protocols and measures as appropriate. Masks are welcomed but not required. We will social distance as much as possible. Please do not attend if you are not feeling well. Refunds for cancellations due to illness with notice will be considered. Substitutions are always welcome. "No-Shows" will receive no refund. Special dispensation will be given with proof of survey during the training dates.

## CONFERENCE PRICING INFORMATION

Prior to June 3, 2022	After June 3, 2022
KHCA/KCAL members Prior to June 3 <b>\$165 per person</b>	KHCA/KCAL members After June 3 <b>\$185 per person</b>
Non KHCA/KCAL members Prior to June 3 <b>\$247 per person</b>	Non KHCA/KCAL members After June 3 <b>\$277 per person</b>

### HOTEL ACCOMMODATIONS

**Bluemont Hotel  
1212 Bluemont Ave.  
Manhattan, KS 66502**

**Call 785-473-7091**

**For a \$99.00 rate until May 20, 2022**