



*The Kansas Health Care
Association and
Kansas Center for
Assisted Living*

*72nd Annual Convention &
Trade Show
Tropical Escape—
Rejuvenating Your Why*

*September 28-30, 2022
Kansas Star Event Center
777 Kansas Star Dr
Mulvane, KS 67110*



Long-term care

Let us help you do more with less



Our tailored mix of products, services and technology equip you to take on clinical and financial challenges for the long term.



Improve care quality

We enable you to deliver improved clinical outcomes, effective transitions of care and reduce readmissions.



Reduce supply spend

We help you lower costs, control purchasing through formulary standardization, and minimize money held up in inventory.



Work more efficiently

We help you minimize the time staff spend on non-caregiving tasks to free up time to focus on residents.



Be the preferred choice

We help you extend your reach and deepen trust between your organization and your residents and families.

1 © 2021 Medline Industries, LP



OUR APPROACH

We free up the resources you need to deliver your best care

Together, we tackle your top priorities, helping you achieve your long-term goals.

Alan Denno
Sales Rep Post Acute Care

Post Acute Sales
Medline Industries, LP

www.medline.com

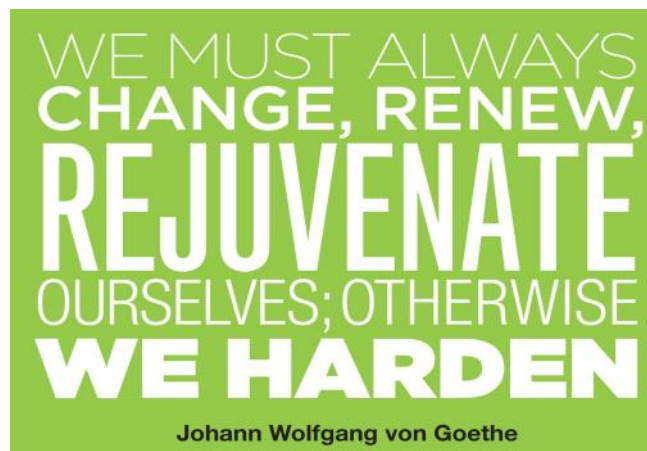
O: 316-209-1018

adenno@medline.com



Greetings and welcome to the 2022 KHCA/KCAL 72nd Annual Convention and Trade Show! We are excited to be back for a 2nd year at the Kansas Star Event Center in Mulvane, KS. The convention was a great success last year and we know it will even be better this year! The Education Committee arranged a wonderful line-up of speakers for you to learn from and a great variety of vendors for you to check out. Most importantly, we are excited for everyone to see and connect with each other in person!

Take the time for a ***“Tropical Escape— Rejuvenating Your Why”***. The real world will still be there waiting for you when you get back. In the meantime, your tropical oasis awaits!



Linda MowBray,
President/CEO



72nd Annual Convention & Trade Show

September 28-30, 2022

Convention Safety Protocol	5
Education at a Glance	6-8
CE Information	9
Education Offerings	11-21
Annual Business Meeting	25
Registration Information	28
Thank Our Sponsors	32
Resources	34
KHCA Board	35
KCAL Board	36
KHCA/KCAL Staff	37

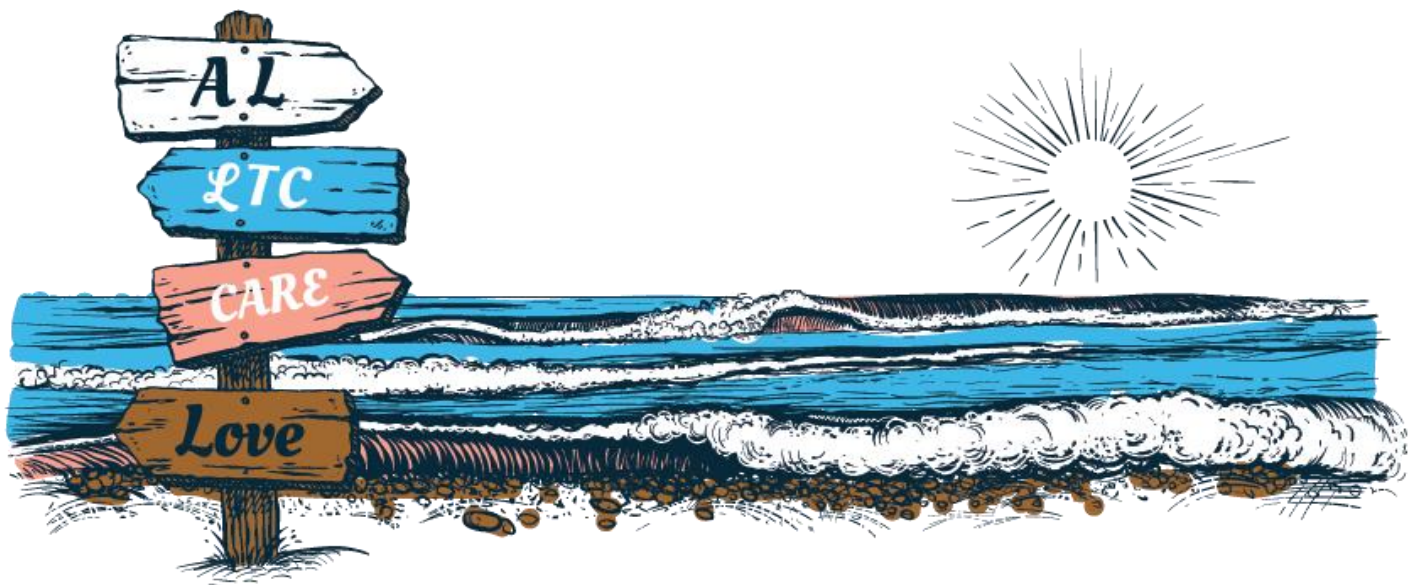


2022 Convention Safety Protocol

KHCA/KCAL would like to welcome you to the 2022 Tropical Escape—Rejuvenating Your Why Convention and Trade Show. We are looking forward to having you with us. We are excited to see those who can join us in person and look forward to visiting and networking.

Visitors and attendees at in-person training and/or meetings should acknowledge that there is a risk of contracting COVID-19 infection and that KHCA/KCAL cannot prevent and is not responsible for such risk of infection to any person who chooses to attend in-person training and/or meetings. KHCA/KCAL requests that anyone who is experiencing COVID-19 symptoms or has been exposed to a COVID-positive individual to stay home to avoid the risk of infection together. KHCA/KCAL will have masks available at the registration table for anyone who would like to or prefer to wear one.

CANCELLATION POLICY: There will be NO REFUND for no shows. Refund for survey or extenuating circumstances related to COVID-19 will be determined on an individual basis if KHCA/KCAL is notified in advance.





**Wednesday,
September 28, 2022**

1:30-5:00 PM

Vendor Move In and preparation for the Tropical Oasis decorating contest

1:00-2:00 PM

Pre-Conference Participant Registration & Silent Auction Bidding

2:00 - 5:00 PM

Pre-Conference Session

**Culture-Driven Recruitment and Retention (3.5 CE ADM) - ADM, AL, HP, SNF, ADM, OPR, Nurse, SW
Retention 911: Reviving, Inspiring, Engaging, Retaining!**

Christopher Ridenhour

Studio ABC

6:00 - 8:00 PM

Welcome to Convention Session

Mezzanine

Sponsored by: *Bank of Oklahoma*



BOK FINANCIAL

Key to Acronyms

ADM - Administrator

AL - Assisted Living

HP - Home Plus

OPR - Operator

SNF - Skilled Nursing Facility

SW - Social Worker





**Thursday,
September 29, 2022**

7:30 - 9:00 AM

Participant Registration

9:00-9:30

Convention Kick Off with Linda MowBray and Staci Cardenas

9:30-10:20

OPENING KEYNOTE: Mark Parkinson, President and CEO of AHCA/NCAL (2.5 ADM) - (For All Participants)

Kansas Star Arena

Sponsored by: *HMG Healthcare, LLC*



10:40 AM - 1:30 PM

Trade Show (For All Participants)

Lunch on the trade show floor Sponsored by: *Recover-Care*



**Full session
descriptions can be
found on pages 11-21**

1:30 - 2:45 PM—Concurrent Sessions

Dealing with Difficult Family Members (1.5 RC) - AL, HP, ADM, OPR, SNF, Nurse, SW, Dietary

Linda Farrar

Studio AB

Redirecting Efforts for PDPM Precision (1.5 ADM) - SNF, ADM, Nurse, SW

Christine Twombly Sponsored by: *Proactive Medical Review*



Studio C

Forgoing a Financially Viable Future in Today's SNF Industry (1.5 ADM) - SNF, ADM, Nurse, OPR, SW

Stephen Taylor and Jana Miller Sponsored by: *CliftonLasronAllen LLP*



Studio DE

3:00 - 4:15 PM—Concurrent Sessions

Eating through a Disaster and Lessons Learned (1.5 RC) - AL, HP, SNF, ADM, OPR, Nurse, SW, Dietary

Kim Fremont Sponsored by: *Health Technologies, Inc.*



Studio AB

Quality Measure Management (1.5 ADM) - SNF, ADM, Nurse, SW

Christine Twombly Sponsored by: *Proactive Medical Review*



Studio C

Staff Empowerment (1.5 ADM) - AL, HP, SNF, ADM, OPR, Nurse, SW

Linda Farrar

Studio DE

4:30 - 5:15 PM

KCAL Annual Meeting and KCAL Board Elections - All Assisted Living

Studio AB





**Friday,
September 30, 2022**

9:00 - 9:50 AM— Concurrent Sessions

The Good, bad and ugly of HCBS - Panel Discussion (1.0 ADM) - AL, HP, OPR, Nurse

Jennifer Scheck, Wellspring Care Homes & Sonia Larimore, Grand Villas Coffeyville

Studio AB

Beyond Medication Regimen Review (1.0 RC) - SNF, ADM, Nurse, SW

Bethany L. Bramwell Sponsored by: *Guardian Pharmacy*



Studio C

What If We Really Could Care for Dementia Symptoms Without Drugs? (1.0 RC) - AL, HP, SNF, ADM, OPR, Nurse, SW

Linda Farrar

Studio DE

10:00-11:00

KHCA/KCAL Annual Meeting (1.0 ADM)

Kansas Star Arena

11:15 - 12:30 PM—Concurrent Sessions

AL Regulatory Networking (1.5 ADM) - AL, HP, OPR

Joan Hudson and Denise German Sponsored by: *Gran Villas*



Studio AB

SNF Networking Session (1.5 ADM) - SNF

Linda MowBray, Linda Farrar and Angela Moore Sponsored by: *Husch Blackwell LLP*



Studio DE

AFTERNOON SESSION (Kansas Star Arena) (3.0 ADM) - All participants

12:30 – 1:30 PM—Lunch Service Sponsored by

Americare



1:30 – 3:00 PM—Staff Awards Program and Stories of Care



**Join Us on Friday @ 1:30—3:00
for the Staff Awards Program and
Stories of Care**

*We will be honoring this year's
outstanding staff!*

**This presentation will be immediately
followed by drawings and giveaways!**

****MUST BE PRESENT TO WIN. VENDORS ARE NOT ELIGIBLE TO WIN PRIZES****

Sponsored by McCrite Plaza





If you wish to receive CE hours for classes, remember you MUST scan the QR Code provided during each class session. This must be completed before the end of convention.

A total of **15.5 hours of CEs** are available if you attend the entire convention, which includes the Pre-Conference session.

Administrators & Operators, you receive an additional **5** elective hours for attending a statewide professional convention.

Administrators- This course offering is approved for 20.5 continuing education clock hours for Kansas licensed adult care home administrators by the Kansas Department of Aging and Disability Services. KDADS Health Occupations Credentialing approved sponsorship number: LTS-A0001. *(If attending all possible classes, a total of 20.5 hours may be earned.)*

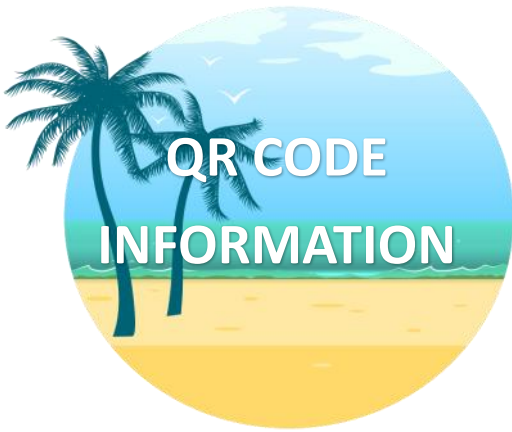
Operators- This course offering is approved for 20.5 continuing education credit hours for operators by the Kansas Department of Aging and Disability Services. Up to 4.5 hours Resident Care, up to 15.5 in ADM, and 5 in Elective. KDADS Health Occupations Credentialing approved sponsorship number: LTS-A0001. *(If attending all possible classes, a total of 20.5 hours may be earned.)*

Nurses- The Kansas Health Care Association is approved as a provider of continuing nursing education by the Kansas State Board of Nursing. This offering is approved for 15.5 contact hours applicable for RN and LPN relicensure. (KSBN LT0030-0338)

Social Workers- This course is approved for 15.5 hours of continuing education hours for Kansas licensed Social Workers by the Kansas Behavioral Sciences Regulatory Board. Approval number: 17-006.

Dietary- This course is approved for 15.5 hours of continuing education hours for Kansas licensed dietitians by the Kansas Department of Aging and Disability Services HOC credentialing. Sponsorship number: LTS-D0002. CDM's must seek approval through their certification board.

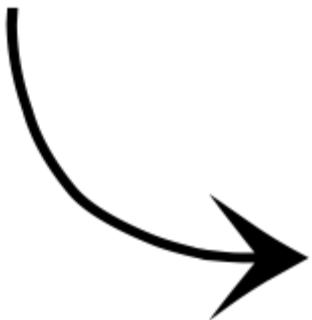
Others- KHCA provides continuing education for many healthcare professionals. Check with your licensing board for approval.



Attendance verifications will be done via QR code readers

Scanning a QR code using your device is straightforward: Open the QR reader application or the camera on your smartphone. ... **The data will be instantly shown on your browser by clicking it. You'll find test QR codes at the registration table. Education committee members will be available to help you. If your camera will not open QR codes please download a QR code reader from the App Store or Google Play store before heading to Convention.**

**TEST TO SEE IF YOUR QR CODE
READER WORKS**



Scan this QR Code to test!





**Wednesday,
September 28, 2022
2:00-5:00 P.M.
Studio ABC**



**Culture-Driven Recruitment and Retention
Retention 911: Reviving, Inspiring, Engaging, Retaining!
Presented by Christopher Ridenhour
3.5 ADM**

For the last two decades, Christopher Ridenhour served as Chief Learning Officer to two large multi-site Life Plan communities. His responsibilities included “actionizing” the Mission, Vision, and Values into daily commitments from personnel across all levels of the organization. He also directed system-wide Onboarding, DEI, Leadership Development, and Engagement strategies resulting in above-industry increases in retention.

Retention 911: Reviving, Inspiring, Engaging, Retaining!

Finally, here is your Golden Ticket to an event especially created for those of you who:

- Have struggled mightily through this season of “unprecedented” headaches and heartaches!
- Have recently considered trading in your credentials for a one-way ticket to a tropical paradise without a forwarding address!
- Desperately need real and immediate solutions to the “Great Resignation!”

Nothing in the HR Handbook offers relief from the last 3 years of unending global mayhem. Variants, political pandemonium, and racial distress has left us all stranded on the corners of Depleted and Numb. Take a moment to imagine the positive outcomes when we create workplace cultures defined by passion, purpose, cooperation! How ready are you to make this the “**Year of Retention?**” You don’t have to rely on wishing, hoping, or crossed fingers to keep folks from rushing for the exits! No more “churn and burn!” No more floor wars or cross-shift conflicts!

Staffing inconsistencies are robbing our residents of the peace and quality of care they expect and deserve! Haphazard, nonspecific retention and engagement strategies guarantee elevated hospital readmission rates, abysmal morale, no-call-no-shows, high accident rates, and pervasive overtime costs. The sheer impact of replacement costs alone threatens organizational survival.

Great news ahead! Retention 911: Reviving, Inspiring, Engaging, Retaining! dives deep into the hearts and minds of your colleagues to reveal what inspires and motivates them to STAY! This session promises to transform the energy traditionally reserved for worrying into countless strategies designed to kick the “workforce crisis” in the tail! How can you afford not to attend this session? Strap in!

This is a separate ticket event which provides 3.5 CE’s in the core area of **Administration**

Members \$95 / Non-Members \$125

(Prior to Sept 14)

Members \$125 / Non-Members \$155

(After Sept 14)



**Thursday,
September 29, 2022
9:00-10:20 A.M.
Kansas Star Arena**



**Convention Kick Off and Opening Keynote
Presented by Mark Parkinson, President and CEO of AHCA/NCAL**

2.5 ADM

Mark Parkinson is the President and CEO of the American Health Care Association (AHCA), which represents over 14,000 skilled nursing facilities and assisted living centers.

Parkinson served as the 45th Governor of the State of Kansas. Prior to that, he was the owner and operator of long-term care facilities in Kansas and Missouri. Under Parkinson's leadership, AHCA focuses on delivering policy solutions to the Hill and CMS, with a special emphasis on quality care. AHCA is now the largest association in long term care and is at record membership.

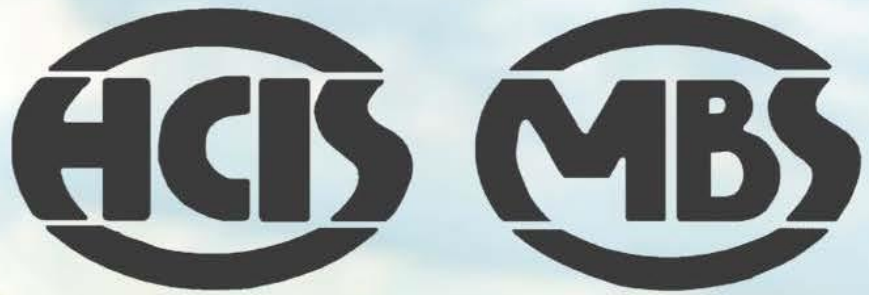
His vision has brought Parkinson recognition. He has been named a Top Association CEO by CEO Update and a top lobbyist for seven consecutive years (2013-2019) by The Hill, a leading Capitol Hill newspaper. Parkinson also has the distinction of being selected as one of the "100 Most Influential People in Healthcare" by Modern Healthcare in 2015. Most recently, Parkinson was named Top CEO in the small-employer category by The Washington Post 2019 Top Workplace survey.

Sponsored By:



**Trade Show and Headshot
Lounge- 10:40-1:30 PM
Kansas Star Arena
Lunch on the tradeshow
floor.**

Platinum Sponsor



HEALTH CARE INFORMATION SYSTEMS

the most comprehensive cost-containment purchasing program
for senior living providers

MEDI-BILL SYSTEMS

a proven means to maximize Medicare Part A and Medicare Part B income

*Contact us today to learn how you can connect
with suppliers like these:*



helping you provide quality care with cost-containing and revenue-enhancing programs

HEALTH CARE INFORMATION SYSTEMS / MEDI-BILL SYSTEMS

450 Regency Parkway, Suite 100, Omaha NE 68114

800-888-1450

hcis-mbs.com



September 29, 2022

1:30-2:45 P.M.



Dealing with Difficult Family Members

(Studio AB)

Linda Farrar

Assisting family members deal with aging or disabled residents is a challenging situation. Family members are dealing with unexpected and heart-wrenching changes in family dynamics and family structure. This is a highly emotional time for everyone involved, so difficult family members are not uncommon. This session will assist techniques for healthcare providers to effectively interact with challenging family members by better understanding of what the family members are experiencing and assisting the family through the transition of care.

This session is appropriate for: AL, HP, SNF, ADM, OPR, Nurse, SW



Redirecting Efforts for PDPM Precision

PROACTIVE
MEDICAL REVIEW

(Studio C)

Christine Twombly

While patient clinical complexities, infection prevention and control practices, and staffing difficulties continue to persist as challenges within SNFs, PDPM management may be an area that is falling on the list of priorities. In this session, we'll take a closer look at what IDT members can do to incorporate day-to-day responsibilities into successful PDPM outcomes without having to reinvent the wheel. Emphasis will be placed on data gathering and communication processes used to strengthen supportive documentation and avoid common MDS coding errors to promote and maintain MDS and PDPM precision. Examples of common errors, the financial implications and strategies for avoiding similar problems will be included.

This session is appropriate for: SNF, ADM, Nurse, SW



Forgoing a Financially Viable Future in Today's SNF Industry



(Studio DE)

Stephen Taylor and Jana Miller

This session will look at the financial and operational challenges the skilled nursing industry has endured since the beginning of 2020, with a focus on occupancy and workforce challenges, financial outcomes, and increased regulatory oversight. We will discuss various strategies to meet some of these challenges and innovative ideas for organizations to explore as they pursue a financially viable future.

This session is appropriate for: SNF, ADM, OPR, Nurse, SW





Linda Farrar

Linda has dedicated her professional career to providing elders in senior living centers with quality of life and quality of care. Linda received her BSN from The University of Iowa and her post-graduate Licensed Adult Care Home Administrator education from Kansas University. Linda started her senior care career in Wichita as a unit charge nurse and worked her way up to Director of Nursing position, eventually ending up in Topeka, KS at a large CCRC. In 2000, Linda obtained her Nursing Home Administrator's license she has served in the roles of administrator, Executive Director, Executive Management and Chief Operating Officer. Most recently Linda spearheaded the development of a web-based geriatric medication guide tool for LTC staff to provide improved medication administration and to achieve regulatory compliance. She is a part of the AHCA Quality Network.

Christine Twombly

Christine is a clinical consultant with Proactive Medical Review and Consulting. Ms. Twombly is a certified gerontological nurse, a certified resident assessment coordinator (RAC-CT), a certified AANAC master teacher for both the RAC-CT and RAC-CTA certifications, a health care risk manager (LHRM), and is certified in healthcare compliance (CHC). Christine has more than 28 years of experience in post-acute care, including many years of hands-on experience with MDS assessments and related care planning. She has worked under Medicare PPS for skilled nursing facilities (SNFs) since its inception and has a strong working knowledge of PDPM for Medicare as well as RUGS for Medicaid CMI. She has extensive experience working with SNFs to conduct Medicare documentation and billing compliance assessments and providing assistance with third-party medical review and the appeals process.

BREAKOUT SESSIONS



Stephen Taylor

Stephen Taylor is a Principal within the Health Care group at CliftonLarsonAllen (CLA) and serves as the leader of CLA's Privately Held Senior Living and Care practice. Stephen's primary focus is creating enterprise value for skilled nursing and senior living and care stakeholders.

Stephen has 14 years of experience in public accounting with a specialized focus in serving and advising skilled nursing and senior living and care operators, owners and investors in strategic, financial and operational matters. Through deep industry insight, aligned with the strength of CLA's extensive resources and solution capabilities; Stephen is passionate about creating opportunities to increase stakeholder value, expand industry advocacy, and helping clients thrive in a competitive health care climate. Stephen is also a frequent speaker with associations and has made contributions to a number of industry publications.

Jana Miller

Jana Miller is a director with the health care group of CLA focused on regulatory and reimbursement-related consulting. Jana has worked for nonprofit health systems and in public accounting. She has experience performing audits of health care providers and Medicaid-managed care plans for government healthcare agencies and has a background in the preparation and review of Medicare and Medicaid cost reports, DSH surveys, and other regulatory reports.

Jana has more than 15 years of experience in accounting, auditing, financial reporting, and regulatory/reimbursement consulting dedicated to the health care industry. Preparation of annual cost reports for various provider types including academic medical centers, critical access hospitals, skilled nursing facilities, home health agencies, and federally qualified health centers.



September 29, 2022
3:00-4:15 P.M.



Eating through a Disaster and Lessons Learned



(Studio AB)

Kim Fremont

The COVID- 19 pandemic highlighted the need for more robust and detailed plans to handle a widespread illness outbreak within our communities. Overnight dining services were presented with challenges from menu design to menu delivery. We learned many lessons, often the hard way, now is the time to re-group and re-tool to insure we are better prepared to cope with a rapid change in our meal service delivery. In this session tales from the field will be discussed and lessons learned will be reviewed. Case studies will examine how the COVID 19 crisis affected every aspect of the dining operation from staffing to food supplies to meal service delivery. This session will discuss how to do a de-briefing on current disaster planning policies to be better prepared in the future for epidemic and pandemic events.



This session is appropriate for: AL, HP, SNF, ADM, OPR, Nurse, SW, Dietary

Quality Measure Management



(Studio C)

Christine Twombly

Quality measures are tools that help us measure or quantify healthcare processes, outcomes, patient perceptions, and systems that are associated with the ability to provide high-quality health care. This session will review Quality Measures, applicable definitions, and how each Five-Star MDS-based measure is calculated with a focus on ways in which facilities can monitor and improve their Five-Star rating through the Quality Measure domain. Updates regarding SNF QRP and standardized patient assessment data elements (SPADEs) will also be discussed.



This session is appropriate for: SNF, ADM, Nurse, SW

Building a Culture of Staff Empowerment to Improve Care & Improve Operations

(Studio DE)

Linda Farrar

As the long-term care profession recovers from an unprecedented time, some good has come from the experience. One of the lessons learned is that facilities MUST recognize the value of the entire interdisciplinary team and the value of true staff empowerment. Our profession will not be able to recruit and retain quality staff without the organization recognizing that every staff member makes a valuable contribution to each and every resident. A "top-down" organizational chart is no longer workable. This session will provide the basic requirements for implementing solid and consistent staff empowerment at every level of the organization.



This session is appropriate for: AL, HP, SNF, ADM, OPR, Nurse, SW



Kim Fremont

Kim has been involved in healthcare and long-term care for over 38 years and has experience in all aspects of nutritional care and food services in both long-term care and acute care settings. As the Senior Vice President of Health Technologies Kim is responsible for overseeing consulting services to over 1200 client facilities in 18 states, as well as hiring, training and coordination the services of the 150 Health Technologies RD's. Today's healthcare facility must provide up to date nutritional care in a challenging environment while not sacrificing that home like touch and hospitality. Kim's passions included training and education to assist our RD's and clients in providing the very best in dining services. Kim's background includes a Bachelor of Science in Medical Dietetics from the University of Illinois at the Medical Center, Chicago and a Master's in Education and Instructional Technology from Southern Illinois at Edwardsville. Memberships include The Academy of Nutrition and Dietetics including participation in the DHCC practice group and serving on their education committee and the Healthy Aging Practice group; the Missouri Dietetic Association, Illinois Healthcare Association as associate member and served on their Educational Committee for over 15 years. Kim has been a featured speaker at numerous local, state and national healthcare conferences and authored numerous publications in use at HTI/DiningRD today. In her off time you will usually find Kim enjoying her passion for cooking for friends and family or enjoying time boating or skiing in the outdoors.

BREAKOUT SESSIONS



Christine Twombly

Christine is a clinical consultant with Proactive Medical Review and Consulting. Ms. Twombly is a certified gerontological nurse, a certified resident assessment coordinator (RAC-CT), a certified AANAC master teacher for both the RAC-CT and RAC-CTA certifications, a health care risk manager (LHRM), and is certified in healthcare compliance (CHC). Christine has more than 28 years of experience in post-acute care, including many years of hands-on experience with MDS assessments and related care planning. She has worked under Medicare PPS for skilled nursing facilities (SNFs) since its inception and has a strong working knowledge of PDPM for Medicare as well as RUGS for Medicaid CMI. She has extensive experience working with SNFs to conduct Medicare documentation and billing compliance assessments and providing assistance with third-party medical review and the appeals process.





September 30, 2022
9:00 a.m.—9:50 A.M.



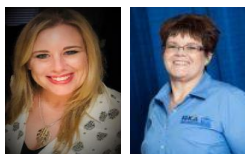
The Good, bad and ugly of HCBS - Panel Discussion

(Studio AB)

Jennifer Scheck & Sonia Larimore

Join members of the KCAL Board, Shane Horsch, Sonia Larimore and Jennifer Scheck for a panel discussion about HCBS. Topics will include negotiation of units, preparing for an audits, proper paperwork ie authorizations and ISP's and more.

This session is appropriate for: AL, HP, OPR, Nurse



Beyond Medication Regimen Review



(Studio C)

Bethany L. Bramwell, RPh, BCGP

Ensuring quality and improving outcomes in the long-term care setting is a team effort. Due to their complexity, medication therapy and delivery processes should be continuously monitored and improved. Pharmacists play an integral role in preventing and managing medication errors and adverse events and can have a direct impact on quality and outcome measures. Consultant pharmacists should broaden their responsibilities in skilled nursing facilities beyond medication regimen reviews by taking on roles in quality and performance improvement projects. Bethany Bramwell, RPh, BCGP, will review the specific quality and outcome measures on which an engaged consultant pharmacist can have a direct impact and discuss types of interventions aimed at improving SNF quality measures.

This session is appropriate for: SNF, ADM, Nurse, SW



What If We Really Could Care for Dementia Symptoms Without Drugs?

(Studio DE)

Linda Farrar

The pandemic posed a real challenge to the CMS Partnership to Improve Dementia Care. True momentum was growing prior to the pandemic, but during the pandemic the off-label use of antipsychotics for dementia-related behaviors rose. Nothing has changed about the reasons for reducing use for dementia...it still is considered inappropriate in most cases, so where do we go from here? We go back to the resident. In this session, we will discuss the common behavioral symptoms experienced by residents with dementia and the conditions/situations that often trigger those symptoms of dementia. Participants will have the opportunity to discuss particular challenges and frustrations in dealing with behavioral symptoms of dementia.

This session is appropriate for: AL, HP, SNF, ADM, OPR, Nurse, SW





Jennifer Scheck

Jennifer Scheck is a business owner, consultant and investor in the healthcare industry, specializing in startups, restructuring, and development of strategies and systems for profitable, sustainable operations. With a passion for healthcare entrepreneurship and 20 years of nursing experience in a variety of settings, Jennifer found a calling to represent and advocate for small business owners and to affect positive change in the financial and regulatory side of healthcare.

Jennifer recently joined the KCAL Board for District 5 to help further that mission.

Sonia Larimore

Sonia Larimore has been in the Health Care Field since 1998. Currently she is the operator of Gran Villas Coffeyville on Tyler. For the past seventeen years Sonia has been a part of the South East Kansas Senior Safety and Wellness coalition. The coalition's purpose is to bring awareness of elder abuse and it's prevention.

Sonia holds a Bachelor of Science in Human Resource management from Oklahoma Wesleyan University. Currently she is the Immediate Past President of KCAL and a former KCAL State Leader.

Sonia's passion for the last 24 years has been to provide service and resources to seniors and the disabled population.

She is also involved in the training of Service and Therapy dogs with Glad Wags of Tulsa, OK.

BREAKOUT SESSIONS



Bethany L. Bramwell, RPh, BCGP

Bethany is a Clinical Consultant Pharmacist from West Plains, Missouri with a passion for geriatric healthcare. Currently, she serves as the Senior Director of Customer Experience & Growth for Guardian Pharmacy of Missouri, overseeing business development and clinical services for partner long-term care centers across the Midwest. She graduated from Southwestern Oklahoma State University's School of Pharmacy in 1999 and is Board Certified in Geriatrics. Mrs. Bramwell is a member of the American Society of Consultant Pharmacists, has received Medication Therapeutic Plan Authority from the Missouri State Board of Pharmacy, and has advanced training in Dementia Care and Antimicrobial Stewardship.





September 30, 2022
11:15 a.m.—12:30 P.M.



AL Regulatory Networking



(Studio AB)

Joan Hudson, RN-BC, LNHA and Denise German, RN, LNHA

Join Joan Hudson, KCAL Clinical Consultant and Denise German, KCAL Board Chair for a State Licensed Only Regulatory Session. This includes Assisted Living, Residential Health Care and Home Plus. Joan will review the most recent survey findings available from KDADS and she and Denise will facilitate a discussion amongst participants about survey experience since the pandemic. Join the session to learn from each other, get questions answered and talk about the latest trends.



This session is appropriate for: All providers working in Kansas State Licensed Only Communities

SNF Networking Session



(Studio DE)

Linda MowBray, Linda Farrar and Angela Moore

Join Linda MowBray, KHCA/KCAL President & CEO, Angela Moore, KHCA VP of Facilities Standards, from Sharon Lane Health Service and KHCA Clinical Consultant Linda Farrar for a SNF Regulatory Networking Session.

Time will be spent discussing changes that impact us with Phase 3 and discussing of survey trends over the past year. Please join this session to gather information, get questions answered and talk about best practices.

This session is appropriate for: All providers working in Skilled Nursing Facilities





BREAKOUT SESSIONS



Joan Hudson

Joan Hudson is a Registered Nurse Board Certified in Gerontology and a Licensed Nursing Home Administrator with roots in Long Term Care and Assisted Living. Joan worked her way through entry level positions in the beginning of her career serving in housekeeping, dietary, C.N.A., and nursing roles including Director of Nursing, then finally as an administrator of a 56 bed community. Joan transitioned to Assisted Living as a compliance nurse for a large ALF in Topeka where she worked for nearly four years. In December of 2019, she became the Administrator for Interim Home Health and Hospice which currently serves approximately 300 elders from Manhattan to Lawrence, KS. Joan continues her consulting business for state licensed homes as well as serving as the clinical consultant for KCAL. She enjoys sharing her gained knowledge and experience to help others grow in the senior care field.

Denise German

Denise German has made senior care her life- long mission. From her time as a state surveyor and head of the Kansas regulatory entity to her owning and operating assisted living communities and a SNF, she always put the seniors as her top priority.

Denise was an adjunct professor at KCKK Community College for their Long-Term Care Administrator Program. She was the Director of the first for-profit Hospice in KS and has been an RN and LTCA for 45 years. She served on the NCAL Board and currently is the President of the KCAL Board. In 1997 Denise won The Heart of Health Care Award which is the highlight of her career. This nursing award is given to 10 recipients (nurses in all fields) from KS and MO. They had over 600 nominations and Denise was one of the recipients. She is currently the Director of Gran Villas Assisted Living Communities.

Linda MowBray

Linda MowBray is the President/CEO of Kansas Health Care Association. Linda joined KHCA/KCAL in October 2001 following 14 years as Social Services Director at a skilled nursing center. She was promoted to Director of the Kansas Center for Assisted Living in April 2013. She works closely with the state licensed only homes on regulatory issues, compliance, reimbursement, KanCare and special projects. Linda's Bachelor's degree is from Washburn University in Topeka.

Angela Moore

Angela Moore is a Registered Nurse and Administrator of Sharon Lane Health and Rehabilitation in Shawnee, KS. She's also the current Vice President of Facility Standards for the Kansas Healthcare Association. She's been working in skilled nursing for the last 28 years.



McKESSON

SILVER SPONSOR

When it comes to helping you provide quality care, McKesson Delivers

McKesson Medical-Surgical delivers comprehensive solutions to help your facility achieve better clinical and business outcomes.

Let us support your business so you can focus on providing the highest standards of quality care.



More Products,
More Choice



Distribution
You Can Count On



Solutions
to Enhance
Your Business



Resources
to Support Care

Scott Fleet
816.305.7177
mms.mckesson.com/ltc



QAPI Prep

Translate Data into Action

Developed by AAPACN, this five-course program trains leaders and teams to provide high-value care and services while positioning your business for continuous growth and sustained performance improvement.

Earn CEs:

Two certificates offering CEs are available upon successful completion.

- 16.21 ANCC CEs
- 18.5 NAB CEs

Price: \$437
when accessing
through ahcancalED

The certification exam is also available under separate registration and fee.

Learn more and become a QAPI Certified Professional (QCP) at [QAPIprep.com](https://www.qapiprep.com).

AAPACN 
AMERICAN ASSOCIATION OF
POST-ACUTE CARE NURSING

ahcancalED 

Delivering Solutions

AHCA
AMERICAN HEALTH CARE ASSOCIATION

NCAL
NATIONAL CENTER FOR ASSISTED LIVING

PHI Coaching Supervision®

PHICoaching.com



Designed specifically for long term care supervisors, this 5-module course has a signature training approach that helps managers and supervisors

- Learn the difference between task-centered and relationship-centered thinking.
- Understand traditional supervision versus coaching supervision.
- Improve your coaching skills with active listening, self-awareness, and self-management.
- Improve your verbal and nonverbal communication skills.

Ultimately, completing the course teaches supervisors how to engage employees in solving work-related problems while empowering them to participate in decisions that impact their daily work. The result is increased worker satisfaction and retention as well as improved quality of care.

Earn

4.50

NAB or Nursing CE Hours



Who is it for?

Supervisory staff (nurse supervisors, department heads, and service delivery coordinators)
Administrators, Executive Directors, and DONs



Price

\$350

AHCA/NCAL Members

\$650

Nonmembers



Questions?

E-mail

educate@ahcancal.org



The 2022 Annual Business meeting will be held Friday, September 30, 2022, from 10:00 - 11:00 AM, in the Kansas Star Arena. All members are welcome - and encouraged - to attend the Annual Business Meeting! All members in good standing are eligible to vote, but remember:

If you wish to receive CE hours for attending you MUST scan the QR Code provided during the meeting. This must be completed before the end of convention.

Listen as CEO Linda MowBray and Board President Staci Cardenas outline what we've got in store for the rest of 2022 and 2023 and vote for new Board Members. Plan to attend - you will not want to miss what this meeting has to offer! The Annual Meeting Packet can be accessed on the members only section of our website. If you don't already know the password, email us at khca@khca.org

Time to Update Your Headshot!



KHCA/KCAL is hosting a Headshot Lounge for Convention attendees.

The Headshot Lounge will be held on the Trade Show Floor in the Kansas Star Arena, and will be open @ 11:30am - 1:30pm Thursday, September 29th!



You are encouraged to drop by the Headshot Lounge to get a free professional headshot. The Lounge will be a great opportunity to network and get a new personal photo emailed to you to use for your professional needs and to update your social media accounts. Start practicing your best smile now and be sure to stop by the Headshot Lounge at the Annual Convention!



2023 COMMITTEE INFO

Find your seat at the KHCA/KCAL Table!



While KHCA/KCAL greatly appreciates your financial support of our programs and services, of equal importance is your active participation and involvement in Association affairs.

Below is a list of the committees seeking provider volunteers:

- * **Education:** The objective shall be to develop educational opportunities for staff working in Long Term Care.
- * **Facility Standards:** The objective shall be to develop and promote culture change, develop and improve facility Standard indicators and Quality Improvement indicators for the membership.
- * **Government Affairs:** The objective shall be to support and develop legislation and regulations favorable to the residents and providers of long term health care.
- * **Nursing Advisory Committee (NAC):** The objective shall be to develop continuing education programs for LTC nurses and further LTC's nursing professionalism.

(NOTE: Sales Associate Members may serve on KHCA/KCAL committees in an advisory, non-voting capacity.)

If you are interested in signing up to work with any of these committees, please stop by the Registration Desk any time during the Convention. We will have sign-up sheets available, and can answer any questions or concerns that may arise. If you have questions after the Convention ends, please contact us at our office (785) 267-6003 or by email khca@khca.org. *Thank you for your consideration!*



NAC Raffle



All proceeds will go toward
the Nurse Advisory Committee
Joan Hamel Scholarship Fund.

1 ticket for \$20, Cash, Check or Credit Cards Accepted.

January 1, 2023 Chiefs vs Broncos Game

Special Thank You Breathe Oxygen & Medical Supply for Donating the tickets





First Time Attendee?

Bring your business cards!

Dress in layers, as temperatures may vary in meeting rooms



Wifi Instructions

1. Settings
2. WiFi
3. Choose Network "Kansas Star Meeting Rooms"
4. Check Box to Accept User Policy
5. Enter Username & Password (**Case Sensitive**)

Username: KHCA/KCALConvention
Password: Medicalodges#1Quality

Sponsored By:



**Download the
KHCA/KCAL App
to stay up to date
wherever you go!**

*Available on iOS and Android
platforms, just search
"Kansas Health Care"
on their App Directories.*

What can you access on the KHCA App?

Advocacy
Events
News
KCAL

Education Calendar
Membership Inquiries
And MUCH MORE!



Make sure you have your Push Notifications
enabled so you don't miss any of the exciting
news we have to share!

Available in the App Store & Google Play—
just search for "Kansas Health Care"

Follow us!





Registration Steps

- Step 1:** Go to www.khca.org and find the Education Drop Down
- Step 2:** On the Education Calendar, locate "72nd Annual Convention and Trade Show"
- Step 3:** Follow the prompts to complete your registration!



Need help? We can talk you through it. Please call or e-mail the KHCA/KCAL office for assistance 785-267-6003 or khca@khca.org.

OPTIONS

MEMBER PRICING

NON-MEMBER PRICING

Per Individual

Per Individual

Pre-Conference Session

Culture-Driven Recruitment and Retention

Not required that you attend Convention to attend Pre-Conference

Before Sept 14, 2022 - **\$95**

After Sept 14, 2022 - **\$125**

Before Sept 14, 2022 - **\$125**

After Sept 14, 2022 - **\$155**

Full Convention - 2 Days

Annual Meeting is held Friday September 30th

Before Sept 14, 2022 - **\$215**

After Sept 14, 2022 - **\$245**

Before Sept 14, 2022 - **\$300**

After Sept 14, 2022 - **\$399**

****Please note that all invoices must be paid in order to receive continuing education credits for the Convention.**

CANCELLATION POLICY: There will be NO REFUND for no shows. Refund for survey or extenuating circumstances related to COVID-19 will be determined on an individual basis if KHCA/KCAL is notified in advance. Substitutions are welcomed.

HOTEL INFORMATION



**The 2022 KHCA/KCAL Convention will be held at the
Kansas Star Event Center
777 Kansas Star Dr., Mulvane, KS 67110**



We have rooms blocked (connected to the event center) at the Hampton Inn & Suites, 785 Kansas Star Dr., Mulvane, KS 67110 offering a special rate of **\$109 until all of the rooms in the block are reserved. Breakfast is included in this room rate.**

To reserve your room(s) call (316) 524-3777 Group Code: KHC or go to <https://bit.ly/3ctwCks>

Hotel Room Block Opens August 17, 2022

Cancellation Policy: Individual reservations can be canceled up to 24 hours from arrival without penalty. If less than a 24 hour notice is given, individual may be charged up to one full night's rate.

Hotel Information: Check In Time 3 pm, Check Out Time 11 am, Early Check In/Late Checkout: Cannot be guaranteed

Reserved Space: KSEC

Amenities:

Breakfast: Complimentary hot or cold buffet served from 6 am to 10 am.

Fitness Center: Access to our 24 hour fitness center is included with each room reservation.

Dining: 4 on-site restaurants located through our lobby in the Kansas Star Casino.

Delivery: Two (2) Local Pizza restaurants deliver to the hotel.

Parking: Complimentary Parking



Map to Event Center



Kansas Star Event Center
777 Kansas Star Dr.
Mulvane, KS 67110



Hampton Inn & Suites
785 Kansas Star Dr.
Mulvane, KS 67110



**Receive a free t-shirt with each
registration!**
Sponsored by:



SAVE THE DATES!



Mark your calendar today for these upcoming dates, including next year's Convention, to be held in September at the Kansas Star Event Center in Mulvane



October 2022 - Virtual
KCAL Fall Operators Course



November 9 & 10, 2022 - Topeka & Wichita
Fall Joint Provider Sponsored by Guardian Pharmacy, LICA-MedMan, LLC and Essity

September 27-29, 2023 - Mulvane
Annual Convention & Trade Show



Wifi Instructions

1. Settings
2. WiFi
3. Choose Network "Kansas Star Meeting Rooms"
4. Check Box to Accept User Policy
5. Enter Username & Password (**Case Sensitive**)

Username: KHCA/KCALConvention
Password: Medicalodges#IQuality

Sponsored By:



SILENT AUCTION



Please consider Donating to a Good Cause!



Take this opportunity to showcase your care home and caregiving in Kansas, don't be afraid to show off! If you or your corporation has something special that you would like to highlight, please let us know...we are accepting all items (not just in baskets!) for this worthwhile cause!

Please contact any of our committee leads to them know if you'll be creating a basket or contributing an exceptional item to the auction! We'll make sure there's enough space.

All Proceeds go to the Foundation for Aging & Care of Elders in Kansas*, to be used toward education for Direct Care Staff.

Questions? Kristina Clevenger with Auburn Pharmacy—kclevenger@auburnpharmacies.com

Lachelle Peterson with Kansas Mobile Solutions—lachelle.peterson@ksmobilesolutions.com



Basket Ideas



Bath & Body Works
Family Fun
Wine and Cheese
Golf Lover
Date Night
BBQ
Art Supplies
Christmas

Dog Lovers
Poolside
Everything Chocolate
KU
KSU
WSU
Car Care
Starbucks

Rainy Day
Tailgating
Kitchen Gadget
Relaxation
Italian Night
Picnic
Gift Cards
Vacation

*The Foundation for Aging and Care of Elders of Kansas, Inc (FACE of Kansas) was established in 2006 to provide a community organization to promote quality care in Kansas adult care homes. FACE of Kansas seeks to improve the quality of care and services and the quality of life for elderly and disabled Americans, through opportunities under which members may exchange ideas and obtain education to improve the knowledge, abilities and standing of the adult care home profession.





Premier Sponsor



Platinum



HEALTHCARE INFORMATION SYSTEMS / MEDI-BILL SYSTEMS

Silver

MCKESSON

Bronze

QS Nurses

Sponsors

AUBURN
PHARMACY

HMG
HEALTHCARE LLC

Kansas Mobile Solutions
A Division of the Wichita Radiological Group
X-Ray • Ultrasound • EKG

SENIOR CARE
pharmacy



MEDICAL LODGES, INC.



BOK FINANCIAL

Breathe
OXYGEN & MEDICAL SUPPLY

HUSCH
BLACKWELL

RECOVER-CARE
"WE CARE ABOUT YOUR RECOVERY"

Guardian
pharmacy



KANSAS HEALTH
ADVANTAGE

FRONTLINE
Management
"Making a Difference... Where it Matters!"



GRAN VILLAS
A MEDICAL LODGE ASSISTED LIVING CENTER



Americare

FEDERICO
DUERST
CONSULTING GROUP

McCrte Plaza

DiningRD.com
Customized Solutions by Health Technologies, Inc.

PROACTIVE
MEDICAL REVIEW

ahcancalED
Delivering Solutions

AHCA. NCAL.
AMERICAN HEALTH CARE ASSOCIATION NATIONAL CENTER FOR ASSISTED LIVING

PHM Innovation Lab

FREE

Learn the fundamentals of PHM and become versed in different PHM models.

Register and begin: PHMinnovationLab.com



ahcancalED
Delivering Solutions

AHCA. NCAL.
AMERICAN HEALTH CARE ASSOCIATION NATIONAL CENTER FOR ASSISTED LIVING

Functional Outcomes Improvement

Specialized training to improve functional outcomes, quality, and services.



Learn more and register: ahcancal.org/funtionaloutcomes

ahcancalED

Delivering Solutions

AHCA. NCAL.
AMERICAN HEALTH CARE ASSOCIATION NATIONAL CENTER FOR ASSISTED LIVING

QAPI Prep

Translate Data into Action

Learn more about becoming a QAPI Certified Professional (QCP).

QAPIprep.com



Earn CEs and get certified.

Developed by

AAPACN
AMERICAN ASSOCIATION OF POST-ACUTE CARE NURSING

73rd AHCA/NCAL

CONVENTION & EXPO

October 9-12, 2022 • Nashville, TN

AHCA. NCAL.
AMERICAN HEALTH CARE ASSOCIATION NATIONAL CENTER FOR ASSISTED LIVING

Prevail.
by FirstQuality

Official Convention Sponsor

ahcancalED

Delivering Solutions

AHCA. NCAL.
AMERICAN HEALTH CARE ASSOCIATION NATIONAL CENTER FOR ASSISTED LIVING

REVENUE CYCLE MANAGEMENT ACADEMY



Successful
Admissions and
Discharges



Interdisciplinary
Documentation
and Coding

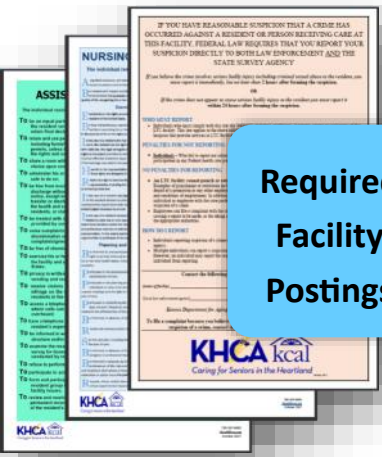
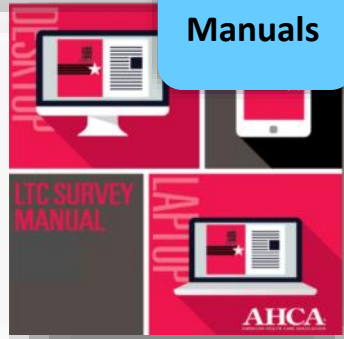
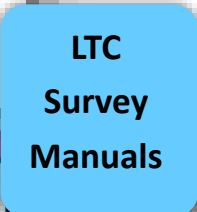
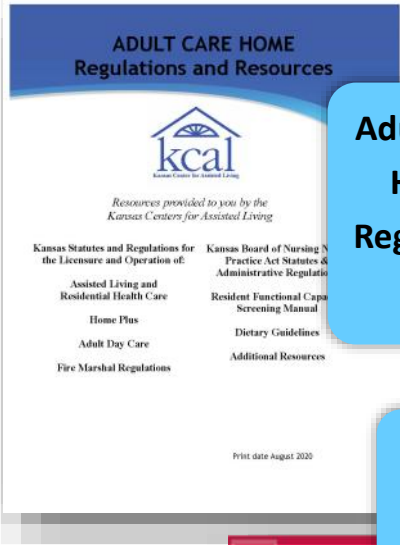
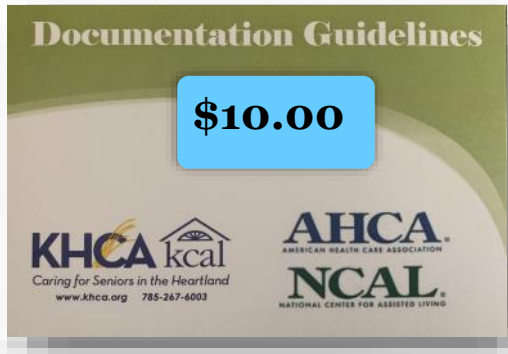


Billing,
Corrections, and
Compliance

Securing Payment for Quality Patient Care



See the KHCA/KCAL Team at
Registration to Purchase





*Chairperson of
the Board:*
Staci Cardenas
Recover-Care



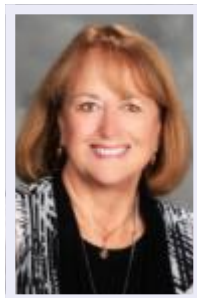
Vice President/Secretary:
Della Ribordy
Americare Systems, Inc



Membership VP
Kendal Kappeler
HMG Healthcare, LLC



Facility Standards VP:
Angela Moore
Sharon Lane Health
Services



KCAL President:
Denise German
Gran Villas Assisted
Living Communities



Education VP:
Melanie Butler
McCrite Plaza
Health Center



Government Affairs:
Anthony Johnson
Recover-Care



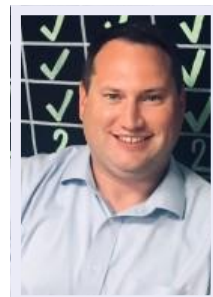
Multi-Facility VP:
Kevin Crowley
Diversicare



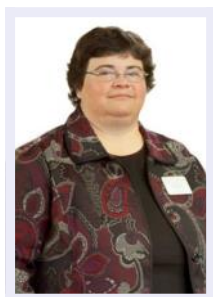
*Nurse Advisory
Committee Chair:*
Teresa Coover
Medicalodges, Inc



District 2 VP:
Travis McBride
Medicalodges, Inc.



District 3 VP:
Ben Leiker
The Healthcare Resort
of Topeka



District 4 VP:
Arlene Wessel
Cambridge Place



District 5 VP:
Tricia Phillip
Axiom HealthCare Services

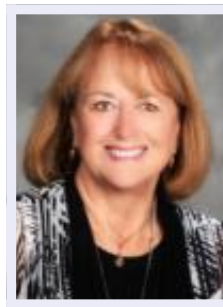


District 6 VP:
Julie Diehl
Frontline
Management



Member At-Large VP:
Levi Davi
Shawnee Post Acute
Rehabilitation Center—
Overland Park





President
Denise German
Gran Villas Assisted
Living Communities



Immediate Past Chair:
Sonia Larimore
Gran Villas Coffeyville on
Tyler



Vice President
Suzie Sexton
Brookdale Rosehill



Secretary/Treasurer
Brett Pu
Village Shalom, Inc.



District 1 VP
Miles Nease
Mission Chateau Senior Living
Community



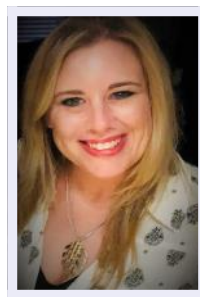
District 2 VP
Lisa Johnson
Emporia Place



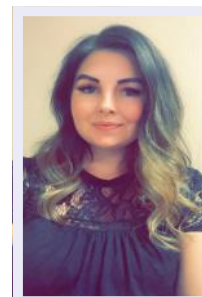
District 3 VP
Shane Horsch
Oak Creek Senior Care



District 4 VP
Joye Gfeller
Brookdale Salina Kirwin



District 5 VP
Jennifer Scheck
Wellsprings of Wichita LLC



District 6 VP
Jamie Vsetecka-Peters
River Bend Assisted Living



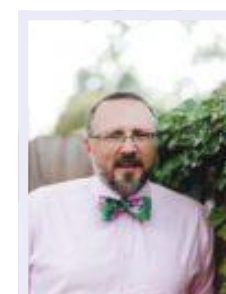
At-Large Member
Shelley Gromer
Guest Homes Estates



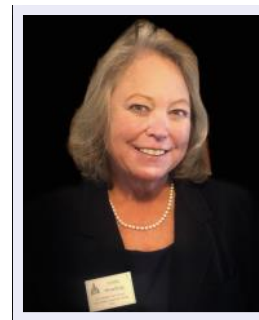
Home Plus VP
Brooke Fischer
Prairie Wind Senior Living



VP At Large
Jeremy Whitt
Delaware Highlands Assisted
Living



Home Plus VP
Robert Miller
Comfort Care Homes, Inc.



Linda MowBray
President / CEO
lmowbray@khca.org

Linda joined KHCA/KCAL in October 2001 following 14 years as Social Services Director at a skilled nursing center. She was promoted to Director of the Kansas Center for Assisted Living in April 2013. She works closely with the state licensed only homes on regulatory issues, compliance, reimbursement, KanCare and special projects. Linda's Bachelor's degree is from Washburn University in Topeka.



Polly Berkley
VP of Operations and Education
pberkley@khca.org

Polly joined the KHCA/KCAL staff in January of 2014 after spending 13 years in the Corporate Events world. Polly has a Bachelor of Science degree in Sociology with a minor in business from Emporia State University and is a Registered Adult Care Home Operator. Polly currently serves on the Nurse Advisory Board for Rasmussen College and is part of the Kansas Dementia Partnership. She takes pride in organizing and planning valuable education events for providers across the state of Kansas.



Jennafer Sumner
Director of Membership
jsumner@khca.org

Jennafer joined KHCA/KCAL in July of 2013 with 11 years of healthcare experience, seven of which were business related. After a year and a half of serving as the Director of Finances for KHCA/KCAL, in February 2015 she transitioned to Director of Membership. Jennafer is a Registered Adult Care Home Operator and has been a great asset to the association.



Kristin Plantz
Director of Finances
kplantz@khca.org

Kristin joined the KHCA/KCAL staff in February 2015, with more than eight years of accounting experience. She earned her Bachelor's degree from Emporia State University. Kristin is a Registered Adult Care Home Operator and has been an integral part of the team.



Teresa Keating
Special Programs Coordinator
tkeating@khca.org

Teresa joined the KHCA/KCAL staff in April 2021 with 20 years of association experience, with nine years of that being health care related. Teresa is a Registered Adult Care Home Operator.