



Caring for Seniors in the Heartland

www.khca.org 785-267-6003

June 13-14 2023

Nurse Leadership Conference



Holiday Inn Wichita East I-35


549 S. Rock Rd.

Wichita, KS 67207

**Room Rate of \$96—Available under KHCA/KCAL
until May 30, 2023, call 316-681-5083**

Register online by going to www.khca.org and clicking “Education Calendar”

Tuesday, June 13, 2023

	11:00 am	Welcome! Networking Lunch with Vendors and Registration
	12:10pm	Welcome from Polly Berkley, KHCA and Teresa Coover President of Nurse Advisory Committee
1.0 Contact Hour	12:20 - 1:20	Opening Keynote - A Nurse Leaders Role in Creating Culture - Allison Lyda, RN, LNHA Quality of care has been a long-standing issue in US nursing homes. The culture change movement that started many years ago has the goal to transition long term care facilities from a "medical model" to the true meaning of "home". That kind of change requires changing the culture of the entire organization....everyone from the regulators to ownership to all staff including direct care partners in all departments and especially residents and family members. What impact does leadership, specifically NURSE leadership have on this movement to create an overall culture that nurtures EVERYONE including residents, staff and families?
	1:20 - 1:45	Break and Networking
1.5 Contact Hours	1:45 - 3:00	Leading the Charge - Linda Farrar, RN, LNHA In Long Term Care, charge nurses are often put into the charge nurse position because they are an excellent nurse, but do not yet have experience with Leadership or Management. This session will focus on the difference & similarities of "leadership" and "management" and how they are both needed in the role of the charge nurse. Time will be spent focusing on the principles of your facility's culture and how it allows for our charge nurses to lead their own teams.
	3:00 - 3:10	Break with vendors
1.5 Contact Hours	3:10 - 4:25	Resident/Family Grievances - Christine Jordan, LMSW This session will focus on the team approach for working with and communicating with residents & families. Time will be spent on the root causes that most difficult families have in common with special focus on strategies and techniques to use when encountering difficult situations.
Special Thanks to our Sponsor:		7 - 9 pm Nurse Networking—Appetizers, Drinks and Networking at Bubba's 33! 412 S. Towne East Mall Dr., Wichita, KS 67207

Wednesday, June 14, 2023

	8:30 am	Nurse Advisory Committee Meeting with Light Breakfast Scholarships and hot topics
1.0 Contact Hour	9:00 - 10:00	Rebuilding After Burnout - Lauren Ruth Martin In a culture where more is more, it can be easy to get lost in the pursuit of "having it all." Many of us are burned out and considering if the current pace of life is sustainable. The hard truth is that for most of us, our ability to "do it all" is wearing off, and we haven't been given a roadmap of how to shift into sustainability. We need permission to reevaluate our day to day mindsets and systems in order to build a more efficient and kind lifestyle.
1.0 Contact Hour	10:00-10:50	The Regulatory Crosswalks - Dawne Altis, RN, KDADS Even before the Rules of Participation, surveyors were "guided" to review other regulations if a deficient practice is identified during the survey process to determine if a deficient practice leads to other regulatory deficiencies for a deficient practice. Those suggestions are now being more closely scrutinized and are being cited under multiple regulations during the survey process, resulting in more deficiencies for what appears to be a single deficient practice. Join Dawne Altus as she discusses how surveyors look at the additional referenced tags and how decisions are made to actually cite a deficient practice in multiple regulatory findings.

Wednesday, June 14, 2023 continued

	10:50 - 11:00	<i>Break with vendors</i>
1.0 Contact Hour	11:00 - 11:50	Advance Directives - Alexandra English, Kansas Legal Services DPOA, POA, what's the difference, who can sign, does it make a difference if they sign in my community or at the hospital, when are they competent to sign, how do we go about getting a resident a guardian? This topic has multiple legal implications. Our presenter will provide participants with answers needed for this every emotional and complex subject.
	11:50 - 12:30	<i>Networking with Vendor Partners and Box Lunch (provided)</i>
2.0 Contact Hours	12:30 - 2:30	Fraud, Waste and Abuse Training including Identity Theft - Steven D. Anderson CIG, Medicaid Inspector General & Lauren Wolf, RN Know how to identify fraud, waste, and abuse (FWA). Understand how to report FWA and the protections available to you. Identify who commits FWA. Understand the role you play in preventing FWA. Know how to help prevent identity theft in the workplace.
	2:30 - 2:45	<i>Last Break of the Day with vendors</i>
1.0 Contact Hour	2:45 - 3:35	Regulatory Hot Topics and Open Discussion—Top Tags and Regs Frequently Tagged in Kansas <i>Facilitated Discussion with Linda Farrar, Clinical Consultant, NAC President, Teresa Coover and other KHCA Board Members</i>
	3:35 - 3:45	<i>Final Wrap up and Departures</i>

Continuing Education Information

Nurses - The Kansas Health Care Association is approved as a provider of continuing nursing education by the Kansas State Board of Nursing. This offering is approved for up to **10.0** contact hours applicable for RN and LPN relic ensure. (KSBN LT0030-0338)

Dietitians - This course is approved for up to **10.0** continuing education clock hours for Kansas Licensed Dietitians by the Kansas Department of Aging and Disability Services. KDADS Health Occupations Credentialing Approved Sponsorship Number: LTS-A0002.

Social Workers - The Kansas Health Care Association is approved as a provider of continuing education by the Kansas Behavioral Sciences Board. This offering is approved for **10.0** continuing education hours. (KSBSB 17-006).

Administrators - This course offering is approved for up to **10.0** continuing education clock hours for Kansas licensed adult care home administrators by the Kansas Department of Aging and Disability Services KDADS Health Occupations Credentialing Approved Sponsorship Number: LTS-A0001.

Operators - This course offering is approved for up to **10.0** continuing education clock hours for registered operators: in the core areas of Resident Care (**8.0**) and Administration (**2.0**), by the Kansas Department of Aging and Disability Services KDADS Health Occupations Credentialing Approved Sponsorship Number: LTS-A0001.

Attendance Certificates will be available for all other attendees. Consult your licensing board or certifying agency for approval.

WHY YOU SHOULD ATTEND:

This special Nurse Leadership Conference is an opportunity for nurses working in the Long Term Care setting to strengthen their leadership skills. Building strong leaders through education is essential to promoting a better quality of life for our residents. Meet new vendor partners and spend time networking and getting to know others that are doing the same valuable work that you are doing!

**CHIEFS TICKETS BEING
RAFFLED OFF TO
RAISE MONEY
FOR NURSE
SCHOLARSHIPS - TICKETS
WILL BE 1 FOR \$20**

Donated by:  **Breathe**
OXYGEN & MEDICAL SUPPLY

CONFERENCE LEADERS



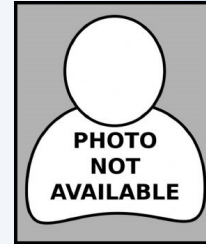
**Teresa
Coover**



**Allison
Lyda**



**Linda
Farrar**



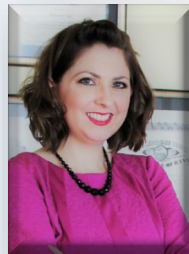
**Christine
Jordan**



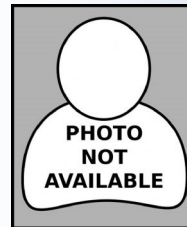
**Lauren Ruth
Martin**



**Dawne
Altis**



**Alexandra
English**



**Steven D.
Anderson**



**Lauren
Wolf**

Special Thanks to our 2023 Platinum Sponsor!



CONFERENCE CANCELLATION POLICY

When written notice is received at least 5 days prior to the conference a refund will be given minus an administrative fee of 25%. Attendee substitutions are permitted. You are responsible for cancelling any hotel reservations you have made.

Cancellations made within 48 hours of the in-person event will NOT receive a refund. An attendee substitution is recommended. Special dispensation will be given with proof of survey during the training dates.

CONFERENCE PRICING INFORMATION

Prior to May 30, 2023

KHCA/KCAL members
Prior to May 30 \$195 per person

Non KHCA/KCAL members
Prior to May 30 \$230 per person

After May 30, 2023

KHCA/KCAL members
After May 30 \$215 per person

Non KHCA/KCAL members
After May 30 \$250 per person

HOTEL ACCOMMODATIONS

Holiday Inn Wichita East I-35
549 S. Rock Rd.
Wichita, KS 67207

Call 316-681-5083

For a \$96.00 rate until May 30, 2023