



Caring for Seniors in the Heartland

www.khca.org 785-267-6003

2024 Nurse Leadership Conference

June 18-19, 2024



Hilton Garden Inn

410 South 3rd St

Manhattan, KS 66502

**Room Rate of \$124 - Available under KHCA/KCAL
until Friday, May 24, 2024, call 785-532-9116**

A special thank you to our sponsor:





TapestryHealth™

Register online by going to www.khca.org and clicking "Education Calendar"

Conference Schedule At-A-Glance

Tuesday, June 18, 2024

	11:00 am	Welcome! Networking Lunch with Vendors and Registration
	12:10pm	Welcome from Polly Berkley, KHCA and Teresa Coover President of KHCA Nurse Advisory Committee
1.5 Contact Hours	12:20 - 1:35	The Magic of Connections for Leaders - <i>Desi Payne</i>
	1:35 - 1:50	Break and Networking
2.0 Contact Hours	1:50 - 3:20	Unlocking Behaviors: A Holistic Approach to Dementia Care - <i>Linda Farrar, RN, LNHA</i>
	3:20 - 3:30	Break and Networking
1.0 Contact Hours	3:30 - 4:20	Work Smarter, Not Harder; Harnessing the Power of People and Artificial Intelligence in Nursing Leadership - <i>Michelle Novotny</i>
 6:30 - 8:30 pm - <i>Liquid Art Winery Tour and Tasting</i> 1745 Wildcat Creek Rd., Manhattan, KS 66503 (Separate Ticket Event Pre-Registration Required) 		

Wednesday, June 19, 2024

.5 Contact Hour	8:30 - 9:00	<p><i>Nurse Advisory Committee Meeting and Elections. (Includes a hot breakfast)</i></p> <p>Positions up for election are President, Vice President and Secretary. Please email the KHCA/KCAL team for details on responsibilities and to get on the ballot. khca@khca.org</p>
1.5 Contact Hours	9:00 - 10:15	<p>Advance Care Planning and Having Effective Conversations about DNR – <i>Cynthia Pendleton</i></p>
	10:15 - 10:30	<i>Break and Networking with Vendors</i>
1.5 Contact Hours	10:30 - 11:45	The Pitfalls of Documentation - Stephanie Preut, Evans and Dixon Attorneys at Law
	11:45 - 1:00	<i>Lunch On Your Own – Off Site</i>
1.5 Contact Hours	1:00 - 2:15	Diagnosing Deeper: Root Cause Exploration for Nursing Excellence - <i>Linda Farrar</i>
	2:15 - 2:30	<i>Last Break of the Day with vendors</i>
1.5 Contact Hours	2:30 - 3:45	Survey Prep: A review of common wound citations and how to avoid them - Dr. Tara Frazier, DNP, AGNP-C, MSN, WCC Advantage Wound Care
0.5 Contact Hour	3:45 - 4:15	Regulatory Hot Topics and Open Discussion - <i>Teresa Coover, KHCA Nurse Advisory Committee President, Linda Farrar, KHCA Clinical Consultant and Cynthia Pendleton, KHCA Facility Standards VP</i>

WHY YOU SHOULD ATTEND:

This special Nurse Leadership Conference is an opportunity for nurses working in the Long Term Care setting to strengthen their leadership skills. Building strong leaders through education is essential to promoting a better quality of life for our residents. Meet new vendor partners and spend time networking and getting to know others that are doing the same valuable work that you are doing!

**CHIEFS TICKETS BEING
RAFFLED OFF TO
RAISE MONEY
FOR NURSE SCHOLARSHIPS -
TICKETS WILL BE 1 FOR \$20**

Donated by:



CONFERENCE LEADERS



**Desi
Payne**



**Teresa
Coover**



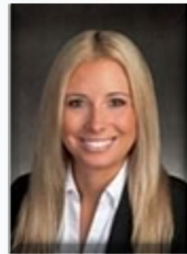
**Linda
Farrar**



**Michelle
Novotny**



**Cynthia
Pendleton**



**Stephanie
Preut**



**Dr. Tara
Frazier**



*Join us! Tuesday, June 18th from 6:30 - 8:30 pm
Liquid Art Winery Tour and Tasting
1745 Wildcat Creek Rd., Manhattan, KS 66503
(Separate Ticket Event Pre-Registration Required)*

Special Thanks to our 2024 Platinum Sponsors!



CONFERENCE PRICING INFORMATION

Until June 7, 2024	After June 7, 2024
KHCA/KCAL members Until June 7 \$199 per person	KHCA/KCAL members After June 7 \$230 per person
Non KHCA/KCAL members Until June 7 \$249 per person	Non KHCA/KCAL members After June 7 \$280 per person

CONFERENCE CANCELLATION POLICY

When written notice is received at least 5 days prior to the conference a refund will be given minus an administrative fee of 25%. Attendee substitutions are permitted. You are responsible for cancelling any hotel reservations you have made.

Cancellations made within 48 hours of the in-person event will NOT receive a refund. An attendee substitution is recommended. Special dispensation will be given with proof of survey during the training dates.

HOTEL ACCOMMODATIONS

Hilton Garden Inn
 410 S. 3rd St..
 Manhattan, KS 66502

Call 785-532-9116
 For a \$124 rate until May 24, 2024

Continuing Education Information

Nurses - The Kansas Health Care Association is approved as a provider of continuing nursing education by the Kansas State Board of Nursing. This offering is approved for up to **10.5** contact hours applicable for RN and LPN relicensure. (KSBN LT0030-0338)

Dietitians - This course is approved for up to **10.5** continuing education clock hours for Kansas Licensed Dietitians by the Kansas Department of Aging and Disability Services. KDADS Health Occupations Credentialing Approved Sponsorship Number: LTS-A0002#

Social Workers - The Kansas Health Care Association is approved as a provider of continuing education by the Kansas Behavioral Sciences Board. This offering is approved for **10.5** continuing education hours. (KSBSB 17-006)

Administrators - This course offering is approved for up to **10.5** continuing education clock hours for Kansas licensed adult care home administrators by the Kansas Department of Aging and Disability Services KDADS Health Occupations Credentialing Approved Sponsorship Number: LTS-A0001#

Operators - This course offering is approved for up to **10.5** continuing education clock hours for registered operators: in the core areas of Resident Care (**8.5**) and Administration (**2.0**), by the Kansas Department of Aging and Disability Services KDADS Health Occupations Credentialing Approved Sponsorship Number: LTS-A0001#

Attendance Certificates will be available for all other attendees. Consult your licensing board or certifying agency for approval.