



Caring for Seniors in the Heartland

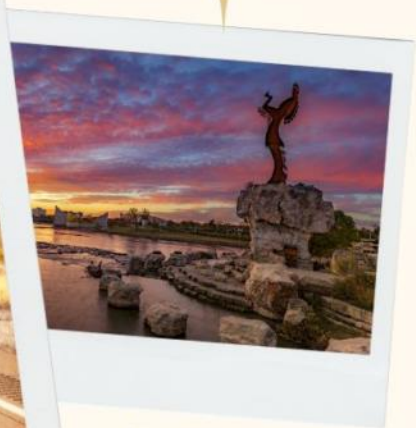
The Kansas Health Care Association and
Kansas Center for Assisted Living

ROAD TRIP

Driving the Future of Healthcare

74th Annual Convention & Trade Show

September 25-27, 2024



Kansas Star Event Center
777 Kansas Star Dr.
Mulvane, KS 67110

[www.khca.org/education/education calendar](http://www.khca.org/education/education-calendar)

Premier Sponsor



Long-term care

Let us help you do more with less

Our tailored mix of products, services and technology equip you to take on clinical and financial challenges for the long term.



Improve care quality

We enable you to deliver improved clinical outcomes, effective transitions of care and reduce readmissions.



Reduce supply spend

We help you lower costs, control purchasing through formulary standardization, and minimize money held up in inventory.



Work more efficiently

We help you minimize the time staff spend on non-caregiving tasks to free up time to focus on residents.



Be the preferred choice

We help you extend your reach and deepen trust between your organization and your residents and families.

1 © 2021 Medline Industries, LP



OUR APPROACH

We free up the resources you need to deliver your best care

Together, we tackle your top priorities, helping you achieve your long-term goals.

Alan Denno
Sales Rep Post Acute Care

Post Acute Sales
Medline Industries, LP
www.medline.com

O: 316-209-1018
adenno@medline.com



TABLE OF CONTENTS

Convention Safety Protocol & Cancellation Policy	5
Education at a Glance	6-8
CE Information	9
Education Offerings	11-21
Annual Business Meeting	27
Registration Information	29
Thank Our Sponsors	33
Resources	36
KHCA Board	37
KCAL Board	38
KHCA/KCAL Staff	39



WELCOME TO THE 2024 KHCA/KCAL 74TH ANNUAL CONVENTION AND TRADESHOW!

Greetings and welcome to the 2024 KHCA/KCAL 74th Annual Convention and Trade Show! Seems like every year, the KHCA/KCAL Education committee and staff just keep outdoing themselves with Convention. Last year's convention was a great success and we are really looking forward to another fun year as the education team takes us on an adventurous Road Trip! We have some wonderful speakers to guide you on this trip and a great variety of vendors to make a pit stop at and top off your tank. We can't wait to see you pull up in the drive and reconnect again this year.

This year's theme is **"Road Trip - Driving the Future of Healthcare"**. We are really excited about this year's theme and what our speakers have to share from their own personal "road trip" experiences and learn all of the new ways that we are driving healthcare toward the future. So, fuel up the tank, get the snacks and pack your bags. Destination, the Kansas Star Convention Center in Mulvane!



Linda MowBray,
President/CEO

Follow us!





2024 CONVENTION SAFETY PROTOCOL AND CANCELLATION POLICY

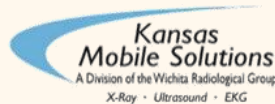
KHCA/KCAL would like to welcome you to the 2024 Convention and Trade Show and this year's theme is Road Trip - Driving the Future of Healthcare! We are looking forward to having you with us. We are excited to see those who can join us in person and look forward to visiting and networking.

Visitors and attendees at in-person training and/or meetings should acknowledge that there is a risk of contracting COVID-19 infection and that KHCA/KCAL cannot prevent and is not responsible for such risk of infection to any person who chooses to attend in-person training and/or meetings. KHCA/KCAL requests that anyone who is experiencing COVID-19 symptoms or has been exposed to a COVID-positive individual to stay home to avoid the risk of infection together.

CANCELLATION POLICY: When written notice is received at least 5 days prior to the event a refund will be given minus an administrative fee of 25% unless otherwise noted. Attendee substitutions are permitted.

Cancellations made within 48 hours of the in-person event will NOT receive a refund. An attendee substitution is recommended.

You will receive a FREE Convention t-shirt if you register by September 6th!
Sponsored by Kansas Mobile Solutions.





ROAD TRIP

Driving the Future of Healthcare

Wednesday, September 25, 2024

1:30-5:00 PM

Vendor Move In and preparation for the Road Trip - Driving the Future of Healthcare decorating contest

1:00-2:00 PM

Pre-Conference Participant Registration & Silent Auction Bidding

2:00 - 5:00 PM

Pre-Conference Session

Caring for Caregivers: Helping Teams Put On Their Own Oxygen Masks (3.5 CE RC) - AL, HP, SNF, ADM, OPR, Nurse, SW

Eric Collett Sponsored by: *Americare*
Studio ABC



Key to Acronyms

- ADM - Administrator
- AL - Assisted Living
- HP - Home Plus
- OPR - Operator
- SNF - Skilled Nursing Facility
- SW - Social Worker

6:00 - 8:00 PM

Welcome to Convention Reception with Drinks, Soda & Heavy Hors d'oeuvres Sponsored by: *Frontline Management & Breathe Oxygen & Medical Supply*



Mezzanine

Reception Sponsored by: *BOK Financial*



Thursday, September 26, 2024

8:15 - 9:00 AM (Doors open at 8:30)

Participant Registration

9:00-9:30

Convention Kick Off with Linda MowBray, KHCA President & CEO and Della Ribordy, KHCA Board Chair

9:30-10:30

OPENING KEYNOTE: Road to Residency - Doug Farmer (1.5 ADM) - (For All Participants)


Kansas Star Arena

Sponsored by: HMG Healthcare 




10:30 AM - 1:15 PM

Trade Show (For All Participants)

Lunch on the trade show floor Sponsored by: Recover-Care 


1:30 - 2:45 PM—Concurrent Sessions

Dwelling in Dementia: How to Authentically Engage our Confused Residents! (1.5 ADM) - AL, HP, ADM, OPR, SNF, SW

Scott Averill and Robi Boland, Wellsville Health & Rehab Sponsored by: Wellsville Health & Rehab 


Studio AB

A Facility Assessment Approach to Behavioral Health (1.5 RC) - SNF, ADM, Nurse, SW

Amber Jennings, Comagine Health Sponsored by: Comagine Health 


Studio C

QAPI: Driving Excellence in Healthcare Quality and Performance (1.5 ADM) - SNF, ADM, Nurse, SW

Courtney Bishnoi, AHCA Sponsored By: AHCA 

3:00 - 4:15 PM—Concurrent Sessions

Deterring Drug Diversion in Assisted Living Facilities (1.5 RC) - AL, HP, OPR, Nurse, SW, ADM

Lauren Wolf, Aetna Sponsored By: Aetna 

Studio AB

CARE/PASRR for the Administrator: What You Need To Know To Get Paid (1.5 ADM) - SNF, ADM, Nurse, SW

Andrea Parrett and Elizabeth Lietz, KDADS

Studio C

Avoiding Detours by Achieving Past Non Compliance (1.5 ADM) - SNF, ADM, Nurse, SW

Linda Farrar, LICA-Med-Man, LLC Sponsored by: Advena Living 

Studio DE

AIT Preceptor Networking Meeting (1.5 ADM) - SNF, ADM

Steve Hatlestad, KHCA AIT Program Consultant

Mezzanine

4:30 - 5:15 PM

KCAL Annual Meeting and KCAL Board Elections (1.0 ADM) - All Assisted Living

Studio AB

Full session descriptions can be found on pages 11-21

Friday, September 27, 2024

9:00 - 9:50 AM— Concurrent Sessions

Compliance Journey: Steering The Way to Preventing Top Survey Deficiencies in Assisted Living and other State Licensed Only Settings (1.0 ADM) - ADM, AL, HP, OPR, Nurse, SW

Dawne Altis, KDADS

Studio AB

Diabetes Detour: Navigating the Road to Health for Older Adults (1.0 RC) - AL, HP, SNF, ADM, Nurse, SW, OPR

Anita Strong, Guardian Pharmacy Sponsored by: *Guardian Pharmacy*



Studio C

Freedom Lane: Navigating Employee Free Speech Rights (1.0 RC) - AL, HP, SNF, ADM, OPR, Nurse, SW

Tyler Hibler & Jenna Brofsky, Husch Blackwell Sponsored by: *Husch Blackwell*



Studio DE

Wear your convention t-shirt today!

10:00-11:00

KHCA Annual Meeting and Elections (1.0 ADM)

Kansas Star Arena

11:15 - 12:30 PM—Concurrent Sessions

AL Regulatory Networking (1.5 ADM) - AL, HP, OPR and staff in these settings

Joan Hudson, KCAL Consultant

Studio AB

SNF Networking Session (1.5 ADM) - SNF and all staff in SNF settings

Linda Farrar, KHCA Consultant and Cynthia Pendleton, VP Facilities Standards

Sponsored by: *Husch Blackwell*



Studio DE

AFTERNOON SESSION (Kansas Star Arena) (3.0 ADM) - All participants

12:30 – 1:30 PM - Lunch Service & Networking

1:30 – 3:00 PM - Staff Awards Program and Stories of Care

This presentation will be immediately followed by drawings and giveaways!

****MUST BE PRESENT TO WIN. VENDORS ARE NOT ELIGIBLE TO WIN PRIZES****

Sponsored by McCrite Plaza and Delaware Highlands Assisted Living



Join Us on Friday @ 1:30–3:00 for the Staff Awards Program and Stories of Care
We will be honoring this year's outstanding staff!



If you wish to receive CE hours for classes, remember you MUST scan the QR Code provided during each class session. This must be completed before the end of convention.

A total of **15.5 hours of CEs** are available if you attend the entire convention, which includes the Pre-Conference session.

Administrators & Operators, you receive an additional **5** elective hours for attending a statewide professional convention.

Administrators - This course offering is approved for 20.5 continuing education clock hours for Kansas licensed adult care home administrators by the Kansas Department of Aging and Disability Services. KDADS Health Occupations Credentialing approved sponsorship number: LTS-A0001. *(If attending all possible classes, a total of 20.5 hours may be earned.)*

Operators - This course offering is approved for 20.5 continuing education credit hours for operators by the Kansas Department of Aging and Disability Services. Up to 6.5 hours Resident Care, up to 10.5 in ADM, and 5 in Elective. KDADS Health Occupations Credentialing approved sponsorship number: LTS-A0001. *(If attending all classes a total of 20.5 hours may be earned.)*

Nurses - The Kansas Health Care Association is approved as a provider of continuing nursing education by the Kansas State Board of Nursing. This offering is approved for 15.5 contact hours applicable for RN and LPN relicensure. (KSBN LT0030-0338)

Social Workers - This course is approved for 15.5 hours of continuing education hours for Kansas licensed Social Workers by the Kansas Behavioral Sciences Regulatory Board. Approval number: 17-006.

Dietary - This course is approved for 15.5 hours of continuing education hours for Kansas licensed dietitians by the Kansas Department of Aging and Disability Services HOC credentialing. Sponsorship number: LTS-D0002. CDM's must seek approval through their certification board.

Others - KHCA provides continuing education for many healthcare professionals. Check with your licensing board for approval.



Does Your QR Code Reader Work?

Please only use this code when you attend sessions in person

Attendance verification will be processed via QR Code Readers. Scanning a QR code using your device is straightforward: Open the QR reader application or the camera on your smartphone. ... The data will be instantly shown on your browser by clicking it. You'll find test QR codes at the registration table. Education committee members will be available to help you. If your camera will not open QR codes please download a QR code reader from the App Store or Google Play store before heading to Convention.

**TEST TO SEE IF YOUR QR CODE
READER WORKS**



Scan this QR Code to test!





**Wednesday,
September 25, 2024
2:00-5:00 P.M.
Studio ABC**

**Sponsored
By:**



**Caring for Caregivers: Helping Teams Put on Their Own Oxygen Masks
Presented by Eric Collett
3.5 RC (AL, HP, SNF, ADM, OPR, Nurse, SW)**

Have you ever considered that a major key to better Dementia care might be helping healthcare workers learn how to improve their own cognitive and mental health? Most healthcare leaders recognize that caregiver burnout is a serious contributor to staffing challenges, but few have a deliberate strategy to help their teams proactively care for themselves. By leveraging our rapidly expanding knowledge of brain science, healthcare teams can improve their own health while simultaneously learning innovative ways to help the residents they serve feel and function better for longer.

This exciting and inspiring presentation will help participants discover:

- A strategy to help increase staff retention by converting your organization into a movement that inspires team members to make better choices in their lives outside of the workplace.
- What decades of research have discovered about how to improve cognitive and mental health.
- A framework that can help you inject greater joy into the workplace.
- How to leverage both education and group challenges to help your team improve their personal health, energy, focus, and drive.

This is a separate ticket event which provides 3.5 CE's in the core area of *Resident Care*

Members \$99 / Non-Members \$129

(Prior to Sept 10)

Members \$129 / Non-Members \$159

(After Sept 10)

Eric Collett, Principal & CEO of A Mind For All Seasons®, LLC, is a nationally recognized speaker, consultant and brain health expert. Eric passionately believes that lifelong learning is a key to finding powerful new solutions to significant challenges and has worked since 2000 to change lives through innovative dementia care techniques, brain health research, and leadership strategies.

Prior to starting A Mind For All Seasons, Eric worked in traditional assisted living as a Program Director and Executive Director for 9 years, then spent almost seven years as the Executive Director of a memory care community where he developed innovative approaches to person-centered care that made a significant difference in how persons living with dementia experience the world. Eric has served on the board of the Idaho Healthcare Association and currently chairs the education committee.

As a public speaker and trainer, Eric has delivered keynote addresses, workshops, and breakout sessions at events in 38 of the 50 States. He is known for his unique ability to explain complex topics in engaging and understandable ways. He regularly speaks about topics ranging from dementia and brain science research to leadership and personal development.

Eric graduated summa cum laude from the University of Utah with a degree in interpersonal communication and a minor in psychology. A licensed administrator, he has also spent over two decades receiving advanced training in healthcare management, Dementia care, neuroscience, gerontology, and other related topics.



**Thursday,
September 26, 2024
9:30-10:30 A.M.
Kansas Star Arena**



**Convention Kick Off and Opening Keynote - Road to Residency
Doug Farmer, President and CEO
Colorado Health Care Association and Center for Assisted Living
1.5 ADM (for all participants)**

Doug Farmer is an extraordinary leader whose commitment to empathy and understanding transcends the conventional boundaries of executive responsibilities. He has experience in health care, government and politics, but has never worked in a long-term care center. Always seeking quality for residents and their caregivers in LTC, he wanted to experience the challenges of our providers and their residents. Understanding there is no substitute for firsthand experience Doug set out to live a day in the life of a resident.

This powerful adventure allowed him to experience firsthand the challenges and joys that come with aging and caregiving. In his opening keynote Mr. Farmer will share his profound insights into the healthcare system, the resilience of the elderly, and the incredible dedication of our caregivers. He will share the invaluable lessons learned from this eye-opening journey, offering us all a fresh perspective on leadership, empathy, and the human spirit.

Doug Farmer is President and CEO of the Colorado Health Care Association (CHCA). The Association represents the nursing home and assisted living professions through education and advocacy. Prior to his time at CHCA, Doug served in numerous roles in Kansas state government. He began his career as an analyst in the Governor's budget office and moved on to serve as Assistant Secretary on Aging; Deputy Secretary of Health and Environment, Chief of Staff to the Attorney General of Kansas, and Deputy Director of the Kansas Health Policy Authority. After leaving state government, Doug served as the Vice President for Policy with the Sunflower Foundation where he worked on public policy matters related to health care, and trained nonprofit executives in public policy advocacy. Doug earned a Master of Public Administration from James Madison University and a BA in Political Science from the University of California at Davis.

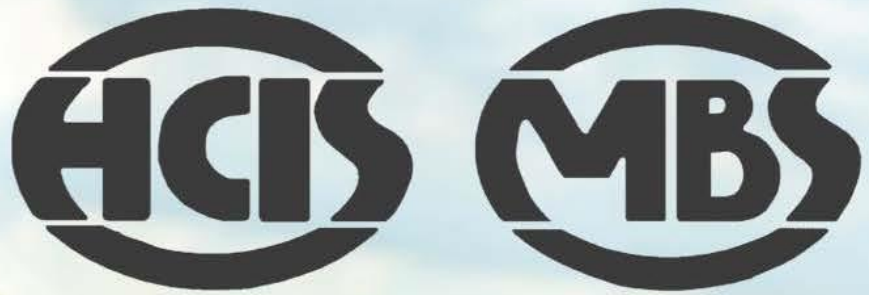
Sponsored By:



**Trade Show 10:30-1:15 PM
Kansas Star Arena
Lunch on the tradeshow floor.
Sponsored by:**



Platinum Sponsor



HEALTH CARE INFORMATION SYSTEMS

the most comprehensive cost-containment purchasing program
for senior living providers

MEDI-BILL SYSTEMS

a proven means to maximize Medicare Part A and Medicare Part B income

*Contact us today to learn how you can connect
with suppliers like these:*



helping you provide quality care with cost-containing and revenue-enhancing programs

HEALTH CARE INFORMATION SYSTEMS / MEDI-BILL SYSTEMS

450 Regency Parkway, Suite 100, Omaha NE 68114

800-888-1450

hcis-mbs.com



**Thursday,
September 26, 2024
1:30 - 2:45 P.M.**



Dwelling in Dementia: How to Authentically Engage our Confused Residents! (1.5 ADM)

Scott Averill and Robi Boland, Wellsville Retirement Community

AL, HP, ADM, OPR, SNF, SW (Studio AB)



This is a "hands on/in the trenches" session designed to give participants new ideas and new approaches to working with residents who have dementia. Through role playing and video demonstration participants will be shown proven methods that can be used by ALL staff members - nursing, dietary, housekeeping and EVEN PEOPLE WHO WORK IN ADMINISTRATION! This session will be conducted where the "rubber hits the road" in providing daily care and quality of life for people with dementia!!



A Facility Assessment Approach to Behavioral Health (1.5 RC)

Amber Jennings, Comagine Health

SNF, ADM, OPR, Nurse, SW (Studio C)



In 2022, CMS revised the State Operations Manual regulations to include several new and updated F Tags related to assessing and meeting residents Behavioral Health (BH) and Substance Use (SUD), and Trauma needs within Certifies Nursing Homes. Comagine Health is a partner with Alliant Health Solutions on The Center of Excellence for Behavioral Health in Nursing Facilities (COE-NF); a CMS and SAMHSA grant funded program, with the goals of being the resource hub to help CMS certified nursing facilities meet the growing behavioral health need of their population through free trainings, resources, and individualized technical assistance with Regional Behavioral Specialists. This presentation will cover regulatory updates that pertain to BH and SUD as well as tools and resources available for skilled nursing facilities.



QAPI: Driving Excellence in Healthcare Quality and Performance (1.5 ADM)

Courtney Bishnoi, AHCA

SNF, ADM, Nurse, SW (Studio DE)



Join us for an exploration of Quality Assurance and Performance Improvement (QAPI) tailored specifically for nursing home care providers. Administrators: This session is designed to equip you with the knowledge and tools necessary to implement and sustain an effective QAPI program within your organization.



Scott Averill

Scott Averill is a licensed nursing home administrator and has worked in long term care since 1989 – 35 years! He is also a C.N.A., C.M.A. and was personally trained in Validation by its founder – Naomi Feil.

Scott and his wife, Susan, own Brookside Health & Rehab in Overbrook, Kansas and Wellsville Health & Rehab in Wellsville, Kansas. They also own Ruble Ranch which is an 8 person memory care home in Overbrook. Scott and Susan are passionate about “culture change” and providing authentic resident centered care to elders around the world. They welcome visitors to their communities anytime - they are open 24 hours a day, 7 days week!!

Scott enjoys running, swimming, cycling, golfing and reading. He has run a marathon in 47 states and has a goal of completing all 50 states in early 2025. He has also pedaled his bicycle across the United States a couple times.



Robi Bolland

Robi has worked in healthcare for 13 years. She began by working in an acute care setting for 4 years before transitioning to long term care. Robi has worked at Wellsville Health & Rehab for 9 years where she serves the residents as their Lifestyle Coordinator.



Amber Jennings

Amber has her bachelor's and master's in psychology, along with a doctorate of education in organizational leadership/development. She has been working as a clinician in the mental health field for over a decade with children to senior adults in multiple healthcare settings, from children in youth homes, children of incarcerated parents, adults with developmental disabilities, and adults with SMI and SUD. Amber resides in St. Louis,

Missouri, although originally from Michigan and Indiana. She currently is the Regional Behavioral Specialist - Improvement Advisor for Region 7: MO, KS, IA, NE with Center of Excellence for Behavioral Health in Nursing Facilities (COE-NF).



Courtney Bishnoi

Courtney Bishnoi serves as Vice President of Quality and Programs at the American Health Care Association (AHCA) and National Center of Assisted Living (NCAL), where she has worked since 2008. She is a national expert in performance excellence with a passion for strategic planning and systems-based performance improvement.

She oversees the AHCA/NCAL Quality Award program, which she has grown in scope and size, to become the largest Baldrige-based program in the country with over 1,200 applications each year. In addition, she has led the Quality Initiative, a national, multi-year effort to provide resources to nursing homes to achieve specific quality targets such as lowering hospitalizations, antipsychotic use and increasing customer satisfaction and mobility. She also guided the successful re-endorsement by the National Quality Forum of AHCA's customer satisfaction measures, CoreQ, as well as their inclusion in several states' payment and regulatory programs.

Since the start of the pandemic, Courtney has led the associations efforts related to COVID-19 testing and vaccine distribution in long term care facilities, serving as primary liaison to CMS, HHS and CDC teams as well as academic partners to develop testing and vaccine guidance and resource for LTC providers. Courtney also oversees AHCA's policy efforts around federal COVID-19 vaccine mandates, working with members to understand the policies and policy makers to understand the impact of these mandates on staffing and other issues.

Before joining AHCA, Courtney served as the Award Program Coordinator at the American Society of Hematology (ASH), managing several medical grant-based award programs. She received her Bachelor of Arts (BA) from the University of Arizona with a major in Communications and a minor in Business.



Thursday,
September 26, 2024
3:00 - 4:15 P.M.

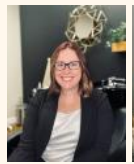


Deterring Drug Diversion in Assisted Living Facilities (1.5 RC)

Lauren Wolf, Aetna

AL, HP, OPR, Nurse, SW, ADM (Studio AB)

Medication diversion poses a significant risk in assisted living communities, impacting resident safety and regulatory compliance. This session will equip Kansas state licensed only providers with essential strategies to identify red flags, prevent, and manage medication diversion effectively. Lauren Wolf, RN will empower assisted living providers to safeguard their residents and operations against the detrimental effects of medication diversion, ensuring compliance with regulatory standards and promoting a culture of integrity and trust within your communities.



CARE/PASSAR for the Administrator: What You Need To Know To Get Paid (1.5 ADM)

Andrea Parrett and Elizabeth Lietz, KDADS

SNF, ADM, Nurse, SW (Studio C)

This session specifically created for Nursing Home Administrators and DON's will give a brief overview of the CARE Program, Standard Admission requirements and its purpose relating to PASRR and Medicaid. Participants will delve into the intricacies of the CARE (Client Assessment, Referral and Evaluation) and PASRR (Pre-Admission Screening and Resident Review) processes, gaining valuable insights into optimizing workflows and ensuring prompt payments. Participants will discover practical strategies including training resources for accelerating payment processing through CARE/PASRR. Attendees will also learn about the CARE Upload tool and how to best utilize it to minimizing payment delays and maximizing revenue streams. Real-world examples and success stories will illustrate the tangible benefits of implementing these strategies within KDADS teams.



Avoiding Detours by Achieving Past Non Compliance (1.5 ADM)

Linda Farrar, LICA-MedMan, LLC

SNF, ADM, Nurse, SW (Studio DE)

The words a provider never wants to hear from a surveyor... "we are putting you in Immediate Jeopardy". It's a real "gut punch"! CMS requires that skilled nursing facilities must be in substantial compliance with Medicare and Medicaid requirements **at all times** and are always responsible for the health and safety of their residents, and that means when something goes wrong, the facility should be proactive and begin the correction process immediately. The reality is things will go wrong sometimes. Bad things may happen. With Past Non-Compliance, the facility has an opportunity to say, "Hey, we identified a negative outcome, we identified the root cause of the noncompliance, and we corrected the noncompliance. The intent of past non-compliance is that things happen but we are using our QAPI processes to do something about issues we face.



AIT Preceptor Networking Meeting (1.5 RC)

Steve Hatlestad, KHCA AIT Program Consultant

SNF, ADM (Mezzanine)

Are you a current Administrator In Training (AIT) Preceptor or are you interested in becoming one? Come learn what it takes to become a preceptor or come communicate with other preceptors on their experiences. Together you can discuss how you can provide a solid foundation for our future administrators.



Lauren Wolf

Lauren Wolf, RN BSN received her nursing degree from Baker University. Her first nursing position was in an Intensive Care Unit. While she quickly found a love of bedside nursing, she was intrigued by an opportunity to become a Nurse Investigator with the Kansas Attorney General’s Office, Medicaid Fraud and Abuse Division. She worked for the state of Kansas for 10 years as a Senior Registered Nurse Investigator under Attorney General Derek Schmidt. She currently works as the Program Integrity manager at Aetna Better Health of Kansas working closely with the special investigation unit to combat fraud, waste and abuse in healthcare.



Andrea Parrett

Andrea Parrett began her employment as a temporary CARE Specialist with the Kansas Department for Aging and Disability Services in April of 2022, transitioning to full-time, she has worked her way up as a CARE Specialist, CARE Coordinator, and now CARE Program Manager. In her current role, Andrea is responsible for the management and coordination of assessment services as it relates to nursing facility stays and responds to Medicaid requests from the Kansas Department of Health & Environment.



Elizabeth Lietz

Elizabeth Lietz began her employment with the State of Kansas as a Temporary CARE Specialist with the Kansas Department for Aging and Disability Services in November of 2022. In July of 2023, she transitioned full-time as a CARE Specialist. Elizabeth helps respond to Medicaid requests from the Kansas Department of Health & Environment, works with facilities in the utilization of the CARE Upload Tool, and manages the flow of information/questions sent to the KDADS CARE Inbox.



Linda Farrar

Linda is a Registered Nurse, a Licensed Nursing Home Administrator and a Certified Dementia Care Specialist. She obtained her Bachelor of Science in Nursing from the University of Iowa in Iowa City, Iowa. She began her Long Term Care career at a retirement center in Wichita, first as a unit supervisor, then the Director of Nursing position and later as a Licensed Nursing Home Administrator. In June 2011 Linda retired from the full-time duties of administration. Linda’s passion is to continue to serve elders and their family members in compassionate, person-directed and centered care. She currently serves as the head of the Kansas Dementia Partnership and serves on the Quality Committee for the Kansas Health Care Association. Linda is also a clinical consultant of the Kansas Health Care Association and the Kansas Centers for Assisted Living.



Steve Hatlestad

Steve has over 46 years experience in operating long term care and assisted living communities with a continued passion of delivering innovative care to our frail elders.

For 20 years he worked for Americare Systems, Inc. a privately held provider of Long Term Care and assisted living communities operating in 4 states with over 3,000 residents and 2800 employees. He was the Vice President of the Skilled Division directly responsible for 25 skilled nursing facilities covering Missouri and Kansas with an operating budget over 5.7 million. He was also responsible for overseeing two regional managers and four nurse consultants. Steve retired from Americare in December 2021 and serves as KHCA’s AIT Program Consultant.

Before that he worked for Life Care Centers of Americare for four years as the Regional Director of Operations. He was responsible for 19 Skilled Nursing Communities in Nebraska, Kansas and Missouri with over 2800 residents and 2400 employees. He also worked for Horizon Health Care and Manor Health Care. Steve will bring to you the experience and the knowledge to guide you through our AIT program.



**Friday,
September 27, 2024
9:00 – 9:50 A.M.**



Compliance Journey: Steering The Way to Preventing Top Survey Deficiencies in Assisted Living and other State Licensed Only Settings (1.0 ADM)

Dawne Altis, KDADS

AL, ADM, HP, OPR, Nurse, SW and all staff that works in these settings (Studio AB)

Join us for an essential training session designed specifically for assisted living providers focused on identifying and addressing the most common survey deficiencies in this setting. Dawne Altis from KDADS will provide comprehensive insights into the top deficiencies frequently cited during regulatory surveys and offer practical strategies to avoid them.



Diabetes Detour: Navigating the Road to Health for Older Adults (1.0 RC)

Anita Strong, Guardian Pharmacy

AL, HP, SNF, ADM, OPR, Nurse, SW (Studio C)



The care of older adults with diabetes is complicated. This program will discuss the factors considered when individualizing care goals for the older adult with diabetes with an emphasis on prevention of hypoglycemia. Medications commonly used to manage diabetes and cardiovascular risk in older adults and their potential adverse effects will be reviewed as well as challenges in diabetes management in the long-term care setting from the patient, facility and the practitioner perspectives.



Freedom Lane: Navigating Employee Free Speech Rights (1.0 RC)

Tyler Hibler & Jenna Brofsky, Husch Blackwell

AL, HP, SNF, ADM, OPR, Nurse, SW (Studio DE)



Employers face complicated legal and practical issues when regulating speech in the workplace. Employers and managers need to understand the limits on their right to regulate or impose rules that limit political speech and expression in the workplace and enforce the rules in a lawful manner. This presentation will discuss important considerations and recent changes in the law that managers should know to help maintain a peaceful, productive workplace.

These considerations increase in importance when presidential elections get nearer, as employees are likely to discuss politics whether inside or outside the workplace. This election year, partisan politics and economic and social issues that have impacted nearly every worker have generated strong opinions about candidates and issues. Expression of some opinions can, however, undermine worker productivity and even result in claims of harassment, discrimination, retaliation, or a hostile work environment.



Dawne Altis

Dawne Altis is the Assistant Commissioner of Survey Certification and Credentialing with KDADS. She is a Registered Nurse with Compact Licensure. In her career she has been a CNA, Charge Nurse, Director of Nursing in a LTCU and NFMH, a Health Facility Surveyor, Quality Improvement Coordinator, Director of Survey, Certification and Credentialing (SCC) and now Assistant Commissioner of SCC. She has been with KDADS for 10 years. Her passion has always been the elderly residents in Kansas.



Anita Strong

Anita Strong, R Ph, BCGP, was born and raised in Cape Girardeau, MO. She received her pharmacy degree from the University of Missouri-Kansas City. During her 34 years as a pharmacist most of her career has been in long term care with 25 years as a consultant pharmacist. Anita is Board Certified in Geriatric Pharmacy (BCGP) and has been with Guardian Pharmacy for 2 years. She has been married for 29 years and has 4 children.



Tyler Hibler

As a labor and employment attorney within Husch Blackwell’s healthcare business unit, Tyler regularly defends healthcare clients against administrative complaints and investigations issued by government enforcement agencies, such as the Equal Employment Opportunity Commission (EEOC), National Labor Relations Board (NLRB), Occupational Safety and Health Administration (OSHA), and Department of Labor. He also routinely conducts workplace investigations on behalf of clients, and represents clients, particularly in Healthcare, in the litigation of various labor and employment lawsuits.



Jenna Brofsky

Jenna Brofsky is a partner with Husch Blackwell. She frequently advises employers on compliance with federal and state employment laws, including Title VII of the Civil Rights Act, the Equal Pay Act and the Americans with Disabilities Act (ADA), as well as numerous wage payment statutes. She enjoys helping her clients navigate the law and maintain a positive and productive workforce.

Jenna remains at-the-ready to conduct workplace investigations involving complaints by employees and third parties. She also advises on and litigates issues involving non-competition obligations.

Jenna provides support to businesses and organizations across industries and is well-versed on employment issues that arise in healthcare specifically, as a member of the firm's healthcare group.





**Friday,
September 27, 2024
11:15 A.M. - 12:30 P.M.**



AL Regulatory Networking (1.5 ADM)

Joan Hudson, KCAL Consultant

All providers working in Kansas State Licensed Only Communities (Studio AB)

Join Joan Hudson, KCAL Clinical Consultant for a State Licensed Only Regulatory and Networking Session. This includes Assisted Living, Residential Health Care and Home Plus. Joan will review the most recent survey findings available from KDADS and facilitate a discussion amongst participants about survey experience. Join the session to learn from each other, get questions answered and talk about the latest trends.



SNF Networking Session (1.5 ADM)

*Linda Farrar, KHCA Consultant and Cynthia Pendleton,
VP Facilities Standards*

All providers working in Skilled Nursing Facilities (Studio DE)



Join KHCA Clinical Consultant Linda Farrar and Cynthia Pendleton, KHCA Facility Standards Vice President, for a SNF Regulatory Networking Session. Time will be spent discussing survey trends over the past year. Please join this session to gather information, get questions answered and talk about best practices.

ROAD TRIP

Driving the Future of Healthcare





Cynthia Pendleton

Cynthia Pendleton is a registered nurse and LNHA. She is a regional nurse consultant for Americare Senior Living. She is also the current Vice President of Facility Standards for the Kansas Healthcare Association. She has been working in skilled nursing for the last 15 years.



Joan Hudson

Joan Hudson is a Registered Nurse Board Certified in Gerontology and a Licensed Nursing Home Administrator with roots in Long Term Care and Assisted Living. Joan worked her way through entry level positions in the beginning of her career serving in housekeeping, dietary, C.N.A., and nursing roles including Director of Nursing, then finally as an administrator of a 56 bed community. Joan transitioned to Assisted Living as a compliance nurse for a large ALF in Topeka where she worked for nearly four years. In December of 2019, she became the Administrator for Interim Home Health and Hospice which currently serves approximately 300 elders from Manhattan to Lawrence, KS. Joan continues her consulting business for state licensed homes as well as serving as the clinical consultant for KCAL. She enjoys sharing her gained knowledge and experience to help others grow in the senior care field.

First Time Attendee?

- ⇒ ***Bring your business cards!***
- ⇒ ***Ask Questions?***
- ⇒ ***Dress in layers, as temperatures may vary in meeting rooms.***



Platinum Sponsor



**Here for
what matters**



Apply for

SCHOLARSHIPS



-- Nursing



-- CNA to CMA



-- Administrator in Training



SCAN ME TO LEARN
MORE ABOUT THE
SCHOLARSHIPS WE
HAVE TO OFFER!



Administrator in Training (AIT) Program



SCAN ME TO LEARN MORE

The KHCA AIT Program consists of 480 clock hours. These hours are time spent in an adult care setting learning all facets of the Administrator's role.

Weekly Check-In's: KHCA Staff will check in with you weekly to make sure that everything's going well.

AIT Tuesday's: In addition to receiving help from your Preceptor and other experienced guests, we also provide Open Discussion Time with an experienced administrator at 10:00 a.m. every Tuesday.

Quarterly Examination Preparedness Seminar in Topeka: KHCA Consultants will be there to guide you through any questions you might have about the State or the National Association of Long-Term Care Administrators Boards (NAB) exams.

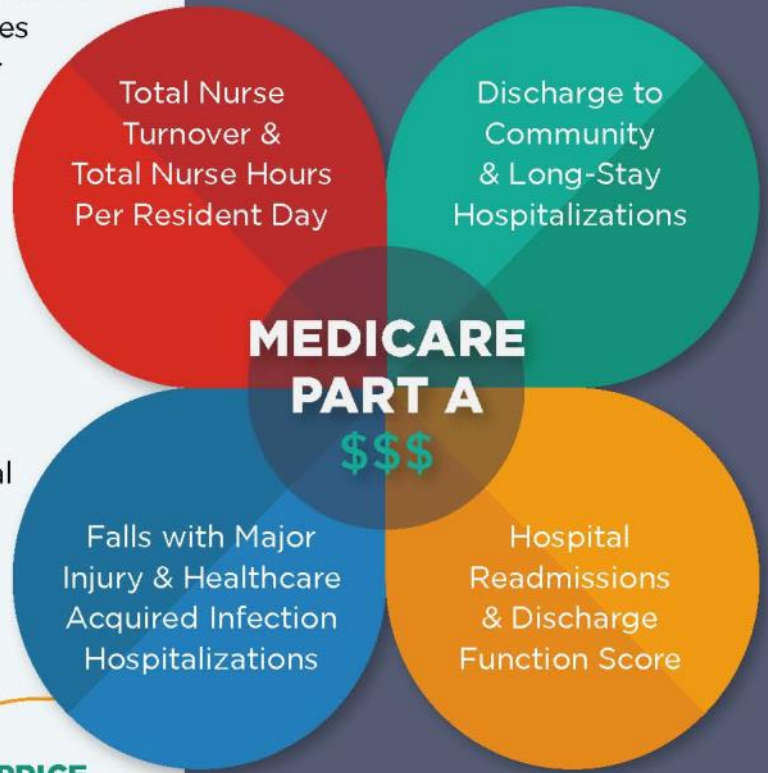
SNF VBP ESSENTIALS

Four additional CMS SNF VBP measures effective 10/1/2024 determine Medicare Part A rates beginning 10/1/2026 adding to the current four measures impacting Part A reimbursements starting 10/1/2025. Understand these eight VBP measures now or start writing your excuses for losing future Medicare payments.

LEARN HOW:

- CMS calculates VBP measures, risk adjustment, facility score, and payment adjustment.
- CMS will apply the incentive payment multiplier.
- To use a SNF VBP prediction calculator to estimate the financial impact of quality measures on Medicare Part A revenue.
- Adopting best practices now helps avoid Part A payment penalties and can boost future incentive payments.

ATTENTION:
SNF Administrators, DONs, Finance, QAPI & Operations Leaders — Your actions now determine your future SNF Medicare Part A rates!



1.25 NAB CEs and **1.0 contact hour** through the Iowa Board of Nursing are available upon course completion

PRICE
\$40
 AHCA/NCAL Members
\$80
 Non-members

LEARN MORE & REGISTER:
ahcancal.org/SNFVBPE
QUESTIONS?
 E-mail educate@ahcancal.org

Gold Sponsor

McKESSON

When it comes to helping you provide quality care, McKesson Delivers

McKesson Medical-Surgical delivers comprehensive solutions to help your facility achieve better clinical and business outcomes.

Let us support your business so you can focus on providing the highest standards of quality care.



More Products,
More Choice



Distribution
You Can Count On



Solutions
to Enhance
Your Business



Resources
to Support Care

Scott Fleet
816.305.7177
mms.mckesson.com/ltc

© 2018 McKesson Medical-Surgical Inc.

BRONZE AWARD

FREE WORKSHOP SERIES



November 6 & 13
1:00 - 3:00 pm CT



DISCUSSIONS

SESSION 1

Understanding the Baldrige framework.
Describing the quality award process.
Review of the organizational profile.

SESSION 2

Review of the organizational profile.
Results and feedback.

If your organization has thought about participating in the AHCA/NCAL National Quality Award program, this is your opportunity to complete the Bronze Award application from beginning to end with coaching support along the way from our expert facilitator.

This free workshop is about more than an award; besides gaining a better understanding of what examiners are looking for and how to use the award criteria as an improvement tool, you will learn how to use the award process to focus, align, and accelerate your performance excellence efforts - becoming a high-performing organization.





ANNUAL MEETING

The 2024 Annual Business meeting will be held Friday, September 27, 2024, from 10:00 - 11:00 AM, in the Kansas Star Arena. All members are welcome - and encouraged - to attend the Annual Business Meeting! All members in good standing are eligible to vote, but remember:

*If you wish to receive CE hours for attending you **MUST** attend in person and scan the QR Code provided during the meeting. This must be completed before the end of convention.*

*Listen as President and CEO Linda MowBray and Board President Della Ribordy update members on association business and outline what we've got in store for the rest of 2024 and 2025. Plan to attend - you will not want to miss what this meeting has to offer! This also gives you the opportunity to meet the KHCA Board members that represent you. The Annual Meeting Packet can be accessed on the **members only** section of our website. If you don't already know the password, email us at khca@khca.org (1.0 CE ADM)*



CONTRIBUTE TO PAC



SCAN ME TO LEARN MORE

Why Contribute

- Helps to ensure that the long-term care continuum is at the table when decisions affecting the profession are made.
- Supports legislators who understand the issues impacting long-term care, regardless of political affiliation. Levels of support are based on the candidate's record.
- Provides a coordinated effort to strengthen our political voice. Together, we are stronger.



Member Committees

2024 COMMITTEE INFO

Find your seat at the KHCA/KCAL Table!

While KHCA/KCAL greatly appreciates your financial support of our programs and services, of equal importance is your active participation and involvement in Association affairs.

Below is a list of the committees seeking provider volunteers:

- * **Education:** The objective shall be to develop educational opportunities for staff working in Long Term Care.
- * **Facility Standards:** The objective shall be to develop and promote culture change, develop and improve facility Standard indicators and Quality Improvement indicators for the membership.
- * **Government Affairs:** The objective shall be to support and develop legislation and regulations favorable to the residents and providers of long term health care.
- * **Nursing Advisory Committee (NAC):** The objective shall be to develop continuing education programs for LTC nurses and further LTC's nursing professionalism.

(NOTE: Sales Associate Members may serve on KHCA/KCAL committees in an advisory, non-voting capacity.)

If you are interested in signing up to serve on any of these committees, please stop by the Registration Desk any time during the Convention. We will have sign-up sheets available, and can answer any questions. If you have questions after the Convention ends, please contact us at our office (785) 267-6003 or by emailing khca@khca.org.



NAC RAFFLE

*All proceeds will go toward the Nurse Advisory Committee
Joan Hamel Scholarship Fund*

**Monday Night Football - November 4, 2024
Chiefs vs Tampa Bay Buccaneers at 7:15 PM**

Included are 2 Tickets (4th row behind the Chiefs bench) and one parking pass

1 ticket for \$20, Cash, Check or Credit Cards Accepted

Special Thank You Breathe Oxygen & Medical Supply for Donating the tickets!





Registration Steps

Step 1: Go to www.khca.org and find the Education Drop Down

Step 2: On the Education Calendar, locate “74th Annual Convention and Trade Show” on September 25th.

Step 3: Follow the prompts to complete your registration!

Need help? We can talk you through it. Please call or e-mail the KHCA/KCAL office for assistance 785-267-6003 or khca@khca.org.

OPTIONS	MEMBER PRICING <i>Per Individual</i>	NON-MEMBER PRICING <i>Per Individual</i>
Pre-Conference Session <i>Developing Confident Senior Care Managers</i> <i>Not required that you attend Convention to attend Pre-Conference</i>	Before Sept 10, 2024 - \$99 After Sept 10, 2024 - \$129	Before Sept 10, 2024 - \$129 After Sept 10, 2024 - \$159
Full Convention - 2 Days <i>Annual Meeting is held Friday September 27th</i>	Before Sept 10, 2024 - \$219 After Sept 10, 2024 - \$249	Before Sept 10, 2024 - \$299 After Sept 10, 2024 - \$399

****Please note that all invoices must be paid in order to receive continuing education credits for the Convention.**

CANCELLATION POLICY: When written noticed is received at least 5 days prior to the event a refund will be given minus an administrative fee of 25% unless otherwise noted. Attendee substitutions are permitted.

Cancellations made within 48 hours of the in-person event will NOT receive a refund. An attendee substitution is recommended.

HOTEL INFORMATION



The 2024 KHCA/KCAL Convention will be held at the
Kansas Star Event Center
777 Kansas Star Dr., Mulvane, KS 67110



We have rooms blocked (connected to the event center) at the Hampton Inn & Suites, 785 Kansas Star Dr., Mulvane, KS 67110 offering a special rate of **\$112 until all of the rooms in the block are reserved. Breakfast is included in this room rate.**

To reserve your room(s) call (316) 524-3777 Group Name: Kansas Health Care Association Group Code: HCA or [Click here](#) to make a reservation

Hotel Room Block Opens August 14, 2024

Cancellation Policy: Individual reservations can be canceled up to 24 hours from arrival without penalty. If less than a 24 hour notice is given, individual may be charged up to one full night's rate.

Hotel Information: Check In Time 3 pm, Check Out Time 11 am, Early Check In/Late Checkout: Cannot be guaranteed

Amenities:

Breakfast: Complimentary hot or cold buffet served from 6 am to 10 am.

Fitness Center: Access to our 24 hour fitness center is included with each room reservation.

Dining: 4 on-site restaurants located through our lobby in the Kansas Star Casino.

Delivery: Two (2) Local Pizza restaurants deliver to the hotel.

Parking: Complimentary Parking

Restaurants at the Kansas Star

The Star Deli

Sunday - Thursday 8:00 am - Midnight
Friday & Saturday 8:00 am - 3:00 am

An Pho

Sunday - Thursday 4:00 pm - 11:00 pm
Friday & Saturday 4:00 pm - 2:00 am

Tin Lizard Bar & Grill

Monday - Thursday 5:00 pm - 11:00 pm
Friday & Saturday 11:00 am - 12:00 am
Sunday 11:00 am - 11:00 pm

Woodfire Grille (reservation should be made in advance)

Wednesday - Saturday 5:00 pm - 10:00 pm

Map to Event Center



Kansas Star Event Center
777 Kansas Star Dr.
Mulvane, KS 67110

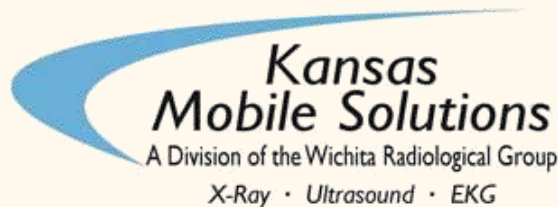


Hampton Inn & Suites
785 Kansas Star Dr.
Mulvane, KS 67110



**RECEIVE A FREE T-SHIRT WITH EACH
REGISTRATION COMPLETED BY
SEPTEMBER 6th!**

Sponsored By:



Registration must be received by September 6th to receive FREE Convention shirt!

— Upcoming —
EVENTS

Mark your calendar today for these upcoming dates, including next year's Convention, to be held in September at the Kansas Star Event Center in Mulvane

**November 6th-19th, 2024 - Virtual
Adult Care Home Operators Course**



**November 11-14, 2024 - Olathe
K-State Campus
DON Bootcamp**

**April 25, 2025 - Lawrence
Assisted Living Conference**

**September 16-18, 2025 - Mulvane
Annual Convention & Trade Show**



WiFi Instructions

1. Settings
2. WiFi
3. Choose Network "Kansas Star Meeting Rooms"
4. Check Box to Accept User Policy
5. Enter Username & Password (Case Sensitive)

Username: KHCAKCALConvention

Password: Medicalodges#1

Sponsored By:





Please Consider Donating to a Good Cause!



Take this opportunity to showcase your care home and caregiving in Kansas, don't be afraid to show off! If you or your corporation has something special that you would like to highlight, please let us know...we are accepting all items (not just in baskets!) for this worthwhile cause!

Please contact any of our committee leads to them know if you'll be creating a basket or contributing an exceptional item to the auction! We'll make sure there's enough space.

All Proceeds go to the Foundation for Aging & Care of Elders in Kansas, to be used toward education for Direct Care Staff and scholarships for Long Term Care providers.*

Questions? Jennifer Reutlinger with Delaware Highlands Assisted Living - jennifer@dhalkc.com

Katie Mitzlaff with KARE - kmitzlaff@doyoukare.com

Susan Pennington with Flint Hills Care & Rehabilitation Center—spennington@flinthillscrc.com

BASKET IDEAS

Bath & Body Works	Dog Lovers	Rainy Day
Family Fun	Road Trip Games	Tailgating
Wine and Cheese	Everything Chocolate	Kitchen Gadget
Golf Lover	KU	Relaxation
Date Night	KSU	Italian Night
BBQ	WSU	Game Night
Art Supplies	Chiefs	Gift Cards
Christmas	Starbucks	Car Care

*The Foundation for Aging and Care of Elders of Kansas, Inc (FACE of Kansas) was established in 2006 to provide a community organization to promote quality care in Kansas adult care homes. FACE of Kansas seeks to improve the quality of care and services and the quality of life for elderly and disabled Americans, through opportunities under which members may exchange ideas and obtain education to improve the knowledge, abilities and standing of the adult care home profession.



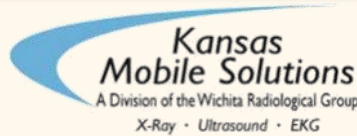
THANK YOU! TO THE FOLLOWING SPONSORS



HEALTHCARE INFORMATION SYSTEMS / MEDI-BILL SYSTEMS



SPONSORS





ahcanceled 

Delivering Solutions

AHCA. NCAL
AMERICAN HEALTH CARE ASSOCIATION NATIONAL CENTER FOR ASSISTED LIVING

PHI Coaching Supervision[®]

PHICoaching.com



ahcanceled 

Delivering Solutions

AHCA. NCAL.
AMERICAN HEALTH CARE ASSOCIATION NATIONAL CENTER FOR ASSISTED LIVING

PHM Innovation Lab

FREE

Learn the fundamentals of PHM and become versed in different PHM models.

Register and begin: PHMInnovationLab.com



ahcanceled 

Delivering Solutions

AHCA. NCAL.
AMERICAN HEALTH CARE ASSOCIATION NATIONAL CENTER FOR ASSISTED LIVING

Functional Outcomes Improvement

Specialized training to improve functional outcomes, quality, and services.



Learn more and register: ahcanceled.org/funtionaloutcomes

ahcanceled 

Delivering Solutions

AHCA. NCAL.
AMERICAN HEALTH CARE ASSOCIATION NATIONAL CENTER FOR ASSISTED LIVING

REVENUE CYCLE MANAGEMENT ACADEMY



Successful Admissions and Discharges



Interdisciplinary Documentation and Coding



Billing, Corrections, and Compliance

Securing Payment for Quality Patient Care

ahcanceled 

Delivering Solutions

AHCA. NCAL.
AMERICAN HEALTH CARE ASSOCIATION NATIONAL CENTER FOR ASSISTED LIVING



INFECTION PREVENTION & CONTROL

for Assisted Living

Facility Assessments 101:

The Driver of Resources, Training, and Competencies



Calling All Nursing Facility Administrators, DONs, and Leaders! Learn the essentials for a successful facility assessment!

Mentioned over 100 times throughout the State Operations Manual.

The facility assessment online training from ahcancalED will explain the relationship between the facility assessment and everything else SNF/NF facilities do on a day-to-day basis.

This training will:

- Review how to complete a facility assessment and how to then determine which competencies are necessary based upon that assessment.
- Provide a sample facility assessment as a resource along with other examples and connections to the facility assessment and competencies.
- Explain the regulatory requirements for the facility assessment.

Register now to learn more!

Approved for
1.25 NAB CEs and 1 CE
from Iowa Board of
Nursing (IBON).

Price
\$50 AHCA/NCAL Members
\$75 Non-members

This training is for skilled nursing facilities only.

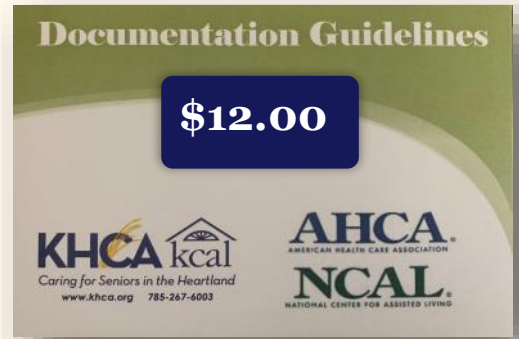


Learn More & Register:
ahcancal.org/NFassessment

Questions?
E-mail educate@ahca.org



See the KHCA/KCAL Team at Registration to Purchase

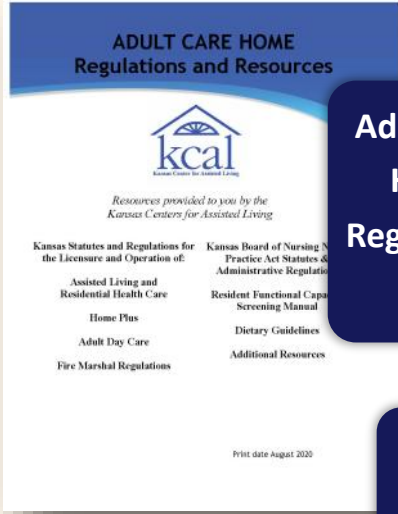
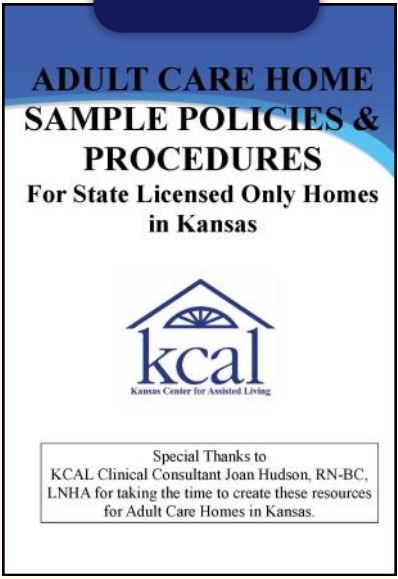


\$12.00

\$12.00



KCAL Policies & Procedures \$150



Adult Care Home Regulations \$89

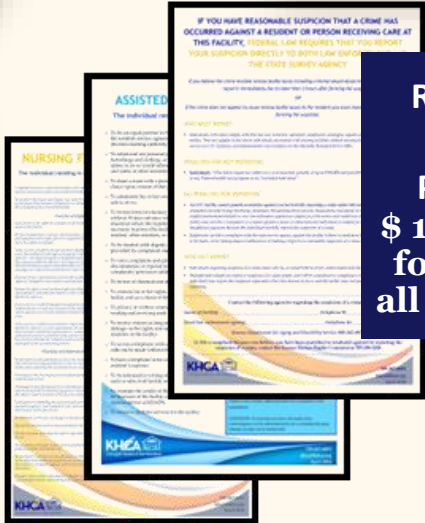
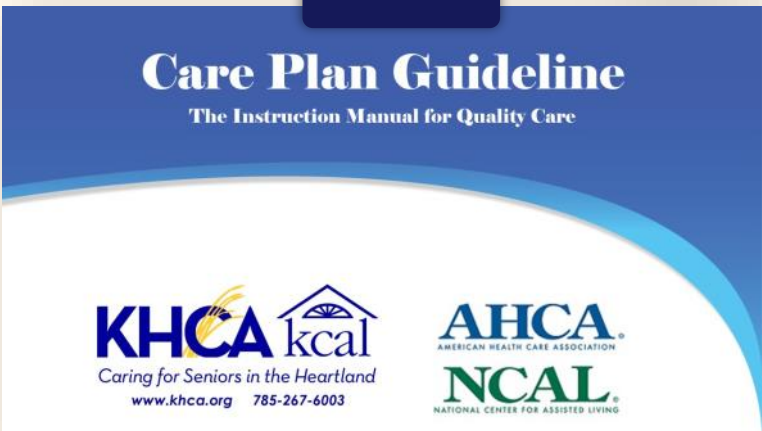
LTC Survey Manuals



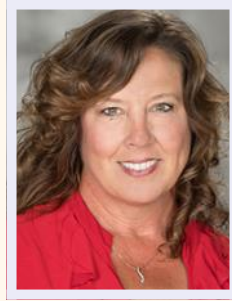
Operator Alumni Pin \$10.00



\$12.00



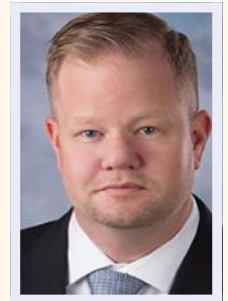
Required Facility Postings \$15 each, 2 for \$25 or all 3 for \$35



Chairperson of the Board:
Della Ribordy
Americare Systems, Inc.



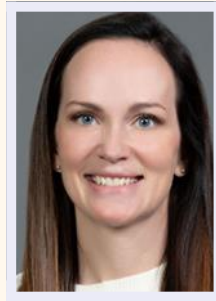
Immediate Past Chair:
Staci Cardenas
Recover-Care



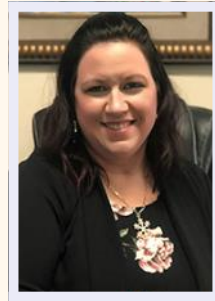
*Vice President/
Treasurer:*
Anthony Johnson
Recover-Care



KCAL President:
Suzie Sexton
Delaware Highlands
Assisted Living



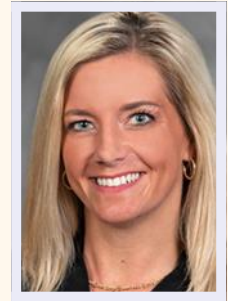
Facility Standards VP
Cynthia Pendleton
Americare Systems, Inc.



Education VP:
Melanie Butler
Shawnee Gardens
Healthcare and Rehab
Center



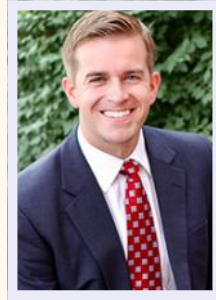
Government Affairs:
Levi Davis
Prairie Ridge Health &
Rehabilitation



Membership VP:
Kendal Kappeler
HMG Healthcare, LLC



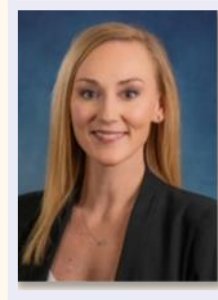
Independent Owners VP:
Angela Moore
Sharon Lane Health
Services



Multi-Facility VP:
Kevin Crowley
Diversicare



Not-for-Profit VP:
Tammy O'Donnell
Ross Hall



*Nurse Advisory
Committee Chair:*
Michelle Novotny
Advena Living



District 1 VP:
Brian Barbeau
Axiom HealthCare
Services



District 2 VP:
Travis McBride
Medicalodges, Inc.



District 3 VP:
Ben Leiker
The Healthcare Resort
of Topeka



District 4 VP:
Rodney Whittington
Advena Living



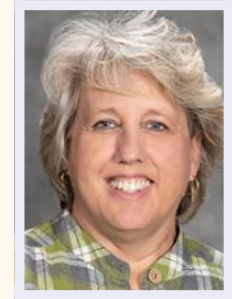
District 5 VP:
Tricia Phillip
Axiom HealthCare
Services



District 6 VP:
Julie Diehl
Frontline Management



President
Suzie Sexton
Delaware Highlands
Assisted Living



Immediate Past Chair:
Shelley Gromer
Guest Home Estates



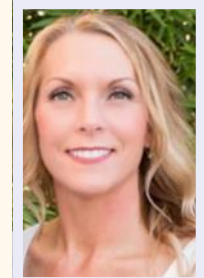
Vice President
Brett Pu
Brookdale Rosehill



Secretary/Treasurer
Jeremy Whitt
Delaware Highlands Assisted
Living



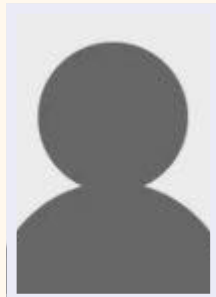
District 1 VP
Miles Nease
Mission Chateau Senior Living
Community



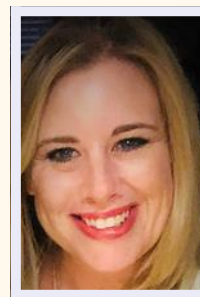
District 2 VP
Amber Schertz
Medicalodges, Inc. | Gran Villas



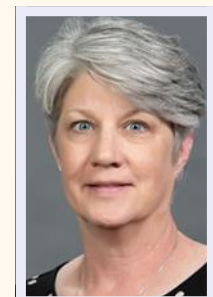
District 3 VP
Shane Horsch
Oak Creek Senior Care



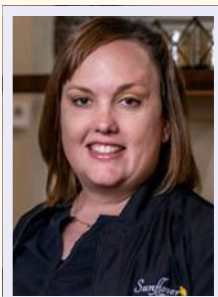
District 4 VP
Open



District 5 VP
Jennifer Scheck
Wellsprings of Wichita LLC



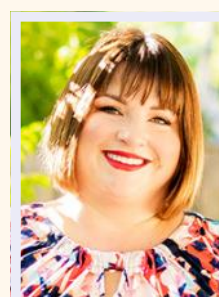
District 6 VP
Juli Hickenbottom
Brookdale Senior Living



Home Plus VP
Lori Owen
Sunflower Care Homes, LLC



Member At Large
Shonna Padgett
Vintage Park at Louisburg, LLC



Member at Large Home Plus
Kasey Breidenthal
Comfort Care Homes, Inc.



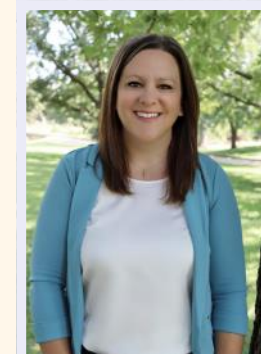
Linda MowBray
President / CEO
lmowbray@khca.org

Linda joined KHCA/KCAL as Education Director in October 2001. Previously, she served 14 years as Social Services Director at a skilled nursing center. In April 2013, she was promoted to Director of the Kansas Center for Assisted Living, working closely with the state licensed only homes on regulatory issues, compliance, reimbursement, KanCare and special projects. In January 2020, Linda was selected as KHCA/KCAL's President and CEO. Linda's Bachelor's degree is from Washburn University in Topeka, and she retains her registered Operator status.



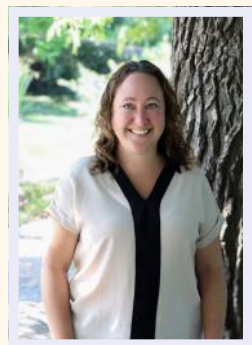
Polly Berkley
VP of Operations and Education
pberkley@khca.org

Polly joined the KHCA/KCAL staff in January of 2014 after spending 13 years in the Corporate Events world. Polly has a Bachelor of Science degree in Sociology with a minor in business from Emporia State University and is a Registered Adult Care Home Operator. She currently serves on the AHCA Long term care meeting planner society board. As well as manages daily operations of the Association. She takes pride in organizing and planning valuable education events for providers across the state of Kansas.



Jennafer Sumner
Director of Membership
jsumner@khca.org

Jennafer joined KHCA/KCAL in July of 2013 with 11 years of healthcare experience, seven of which were business related. After a year and a half of serving as the Director of Finances for KHCA/KCAL, in February 2015 she transitioned to Director of Membership. Jennafer is a Registered Adult Care Home Operator and is the association lead for member communications and recruitment.



Kristin Plantz
Director of Finances
kplantz@khca.org

Kristin joined the KHCA/KCAL staff in February 2015, with more than eight years of accounting experience. She earned her Bachelor's degree in Accounting from Emporia State University. Kristin is a Registered Adult Care Home Operator and is essential to the financial management of both KHCA and KCAL.



Teresa Keating
Special Programs Coordinator
tkeating@khca.org

Teresa joined the KHCA/KCAL staff in April 2021 with over 20 years of association experience, with nine years of that being health care related. Teresa is a Registered Adult Care Home Operator and is the Association lead in our newest education endeavor the KHCA Administrator In Training (AIT) Program.